



5/786 Esplanade MORNINGTON VIC

1 2 1

A hallmark of luxurious living adjacent to the iconic Mornington Park, this elegantly designed one-bedroom apartment showcases exceptional materials and superior finishes throughout. Central to Mornington's playground of recreation and hospitality, it sits at the core of celebrated coastlines, award-winning restaurants, and coastal walking tracks.

With secure entry and lift connectivity taking you straight to the front door, a modern design unfurls across a light-filled social heart, welcoming with designated living and dining areas. Spacious proportions extend into the adjoining kitchen, featuring an integrated Fisher & Paykel fridge/freezer and Miele cooking appliances seamlessly housed within custom cabinetry.

[For full version visit the website](#)

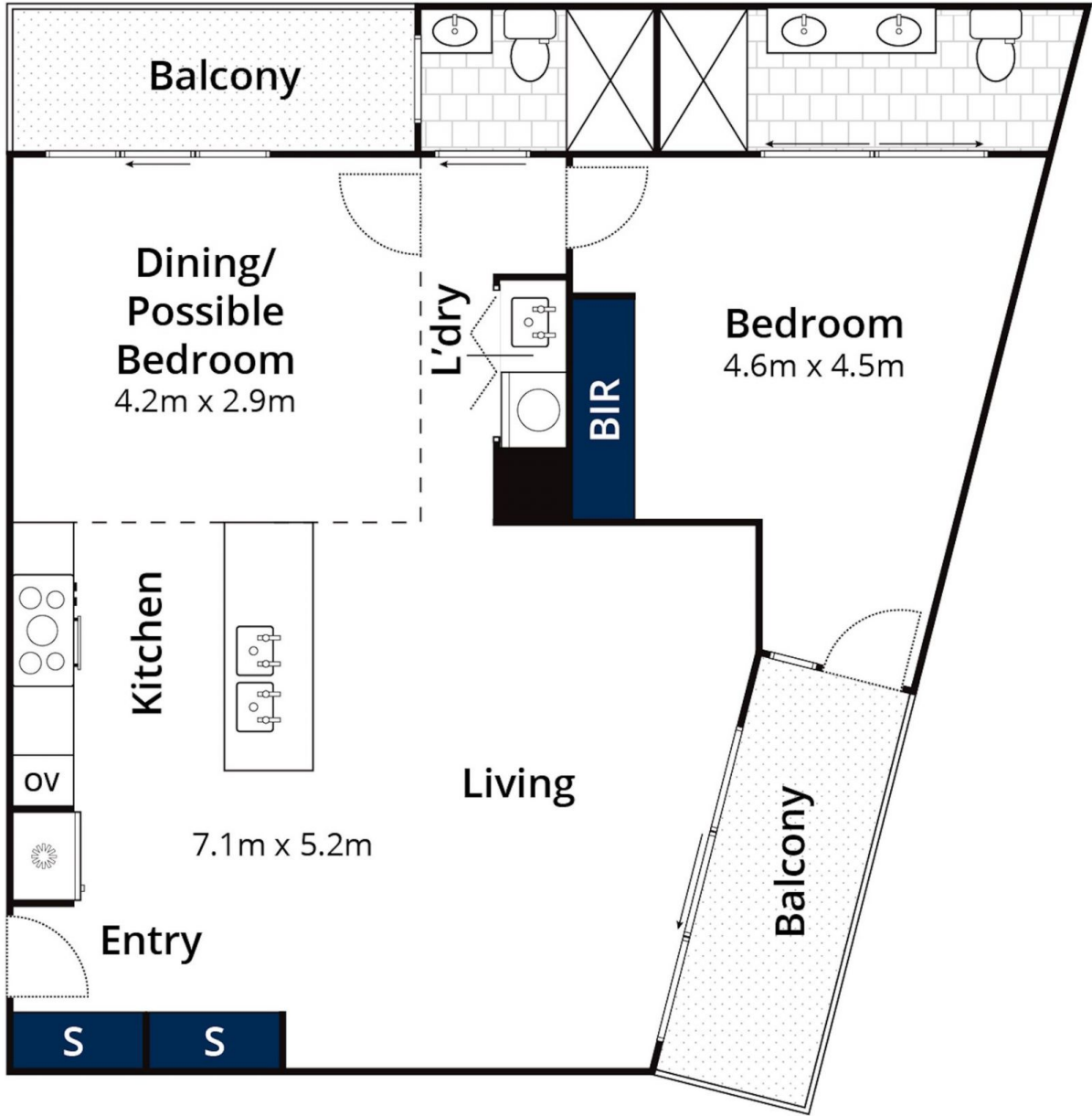
**Type** : Apartment  
**Price** : \$870,000 - \$950,000  
**View** : <https://www.mcewingpartners.com/sale/vic/mornington-peninsula/mornington/residential/apartment/8652927>



**Dean Phillips**  
0359754555



**Grace Green**  
0359754555



Approx House Area 79m<sup>2</sup>

Whilst [bwr.com.au](http://bwr.com.au) has made every attempt to ensure the accuracy of the floor plan contained here, measurements are approximate and no responsibility is taken for any error, omission, or mis-statement. This plan is for illustrative purposes only.

**5/786 Esplanade, Mornington**