






1 Beatty Parade MORNINGTON VIC

3  2  2 

Captivating with a design philosophy that is adventurous and intentional, this striking contemporary residence exudes authentic warmth and sleek aesthetics on the fringe of Main Street. An architectural masterpiece delivered by Cahill Building Group, the three bedroom, two bathroom home celebrates the fundamental beauty of natural elements, integrating red brick, polished concrete, glass and timber with design functionality that suits every stage.

A two-storey design, the home prioritises an open-concept ground floor that fosters connection among family and friends, where the warmth of a gas fireplace fills the living and dining space, and adjoining kitchen. Well-designed with premium appliances, including a Fisher & Paykel induction cooker, the culinary zone offers generous

Type : House

Price : \$ 1,775,000

View : <https://www.mcewingpartners.com/sale/vic/mornington-peninsula/mornington/residential/house/8645910>



Dean Phillips
0359754555

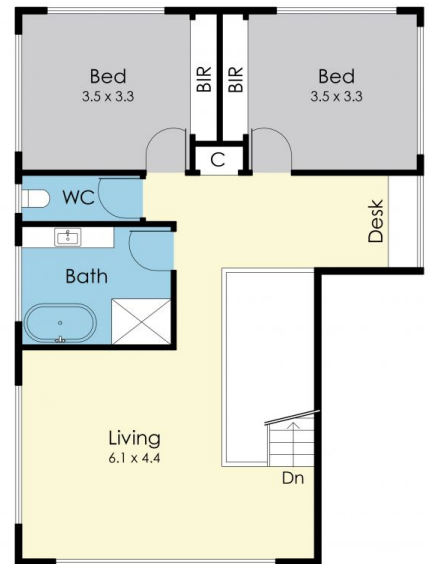


Lisa Bendle
0359754555

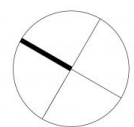
[For full version visit the website](#)



Beatty Parade



Approx. House Area 247m²
 Approx. Land Area 265m²



North Orientation for Site & Floor Plan

1 Beatty Parade Mornington

This floorplan is for illustration purposes only and no warranty is given to its accuracy. Purchasers are advised to carry out their own investigations.