



## 7 Pacific Terrace MOUNT MARTHA VIC

3 3 2

Inviting a sparkling blue bay vista in through almost every window with an open plan design that shows rare design ingenuity, this seaside residence offers lovely elevation that truly lets you revel in the beauty of the bay. With a sweeping dual driveway and towering palms providing immediate tranquility, the floorplan forms a circle of three flowing living areas all positioned to enjoy a beautiful water view, while a wall of windows and a broad balcony enhances a panoramic vista where the bay seems so close you could dive straight in. With a superb kitchen taking centre stage, this is a perfect design for the entertainer where you can serve drinks at the bar and enjoy them beside the lounge room fire in winter or out on the balcony in summer as the sunset on the horizon makes the sky burst into brilliant colour. Accommodation is grouped on the

**Type** : House  
**Price** : \$2,350,000 - \$2,450,000  
**Land Size** : 1084 sqm  
**View** : <https://www.mcewingpartners.com/sale/vic/mornington-peninsula/mount-martha/residential/house/8315813>



**Marcus Gollings**  
0359754555

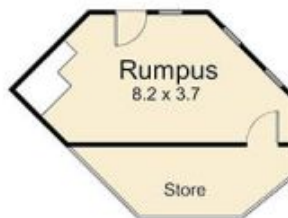
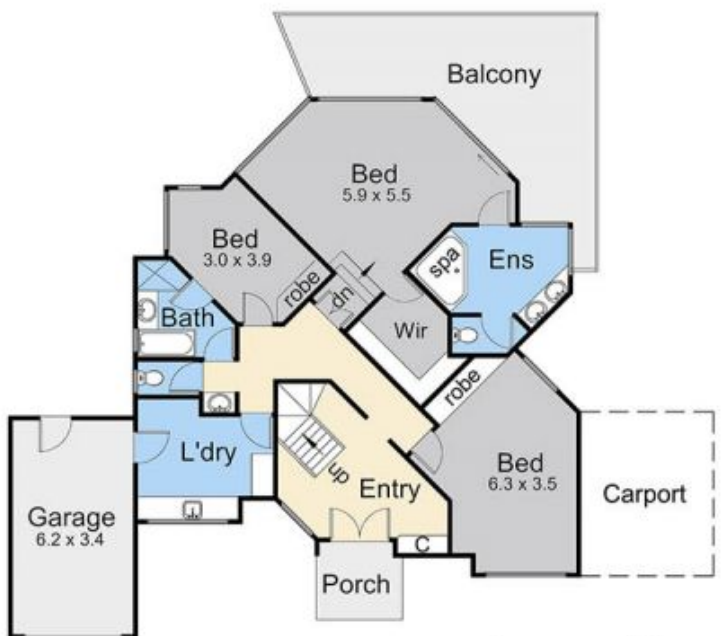
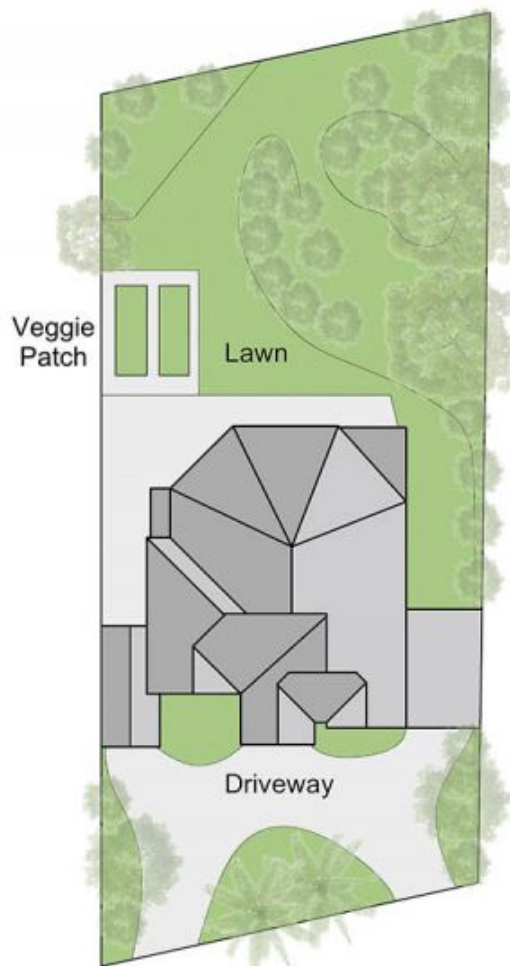
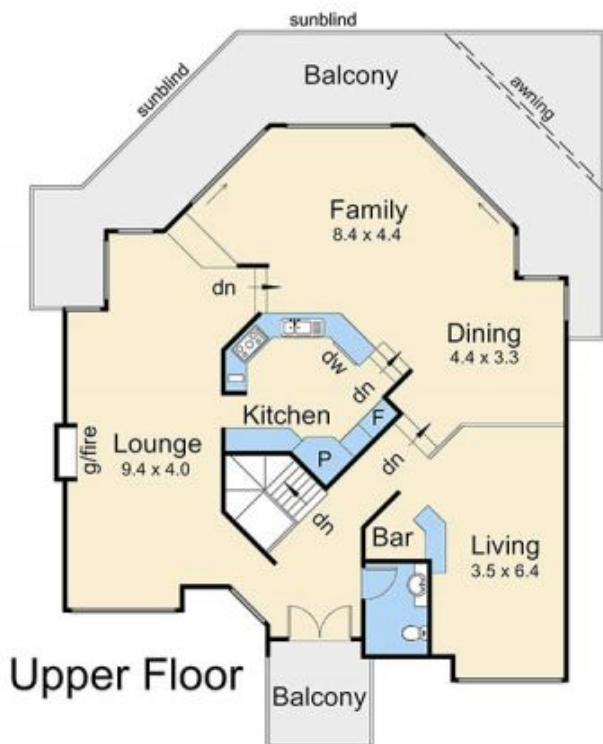


**Indi Fisher**  
0359754555

[For full version visit the website](#)



Internal Living Area = 32.2 squares (approx)  
 Balconies = 7.7 squares (approx)



## 7 Pacific Terrace, Mount Martha

This floorplan is for illustration purposes only and no warranty is given to its accuracy. Purchasers are advised to carry out their own investigations. Produced by **realtywriters** (03) 5970 2222