



### 3 Batman Avenue MOUNT ELIZA VIC

4 🛏 3 🚿 3 🚗

A sanctuary of calm for a busy family boasting multiple spacious living areas with leafy outlooks, a large lawn, glimpse of the city skyline and the summer fun of an inground solar heated, salt chlorinated pool with a surrounding paved area - all set on a private 1684sqm allotment behind a remote gate! With four bedrooms and the option to convert one or more of the four living areas into more accommodation or fabulous work-from-home spaces, this is a home that offers true flexibility. Located in the heart of Mt Eliza's coveted Quinns' Estate area, it is only a couple of minutes from Peninsula Grammar and Toorak College private schools as well as Mt Eliza Secondary College - all with excellent facilities and academic records.

**Type** : House  
**Land Size** : 1684 sqm  
**View** : <https://www.mcewingpartners.com/lease/vic/bayside/mount-eliza/residential/house/8290305>

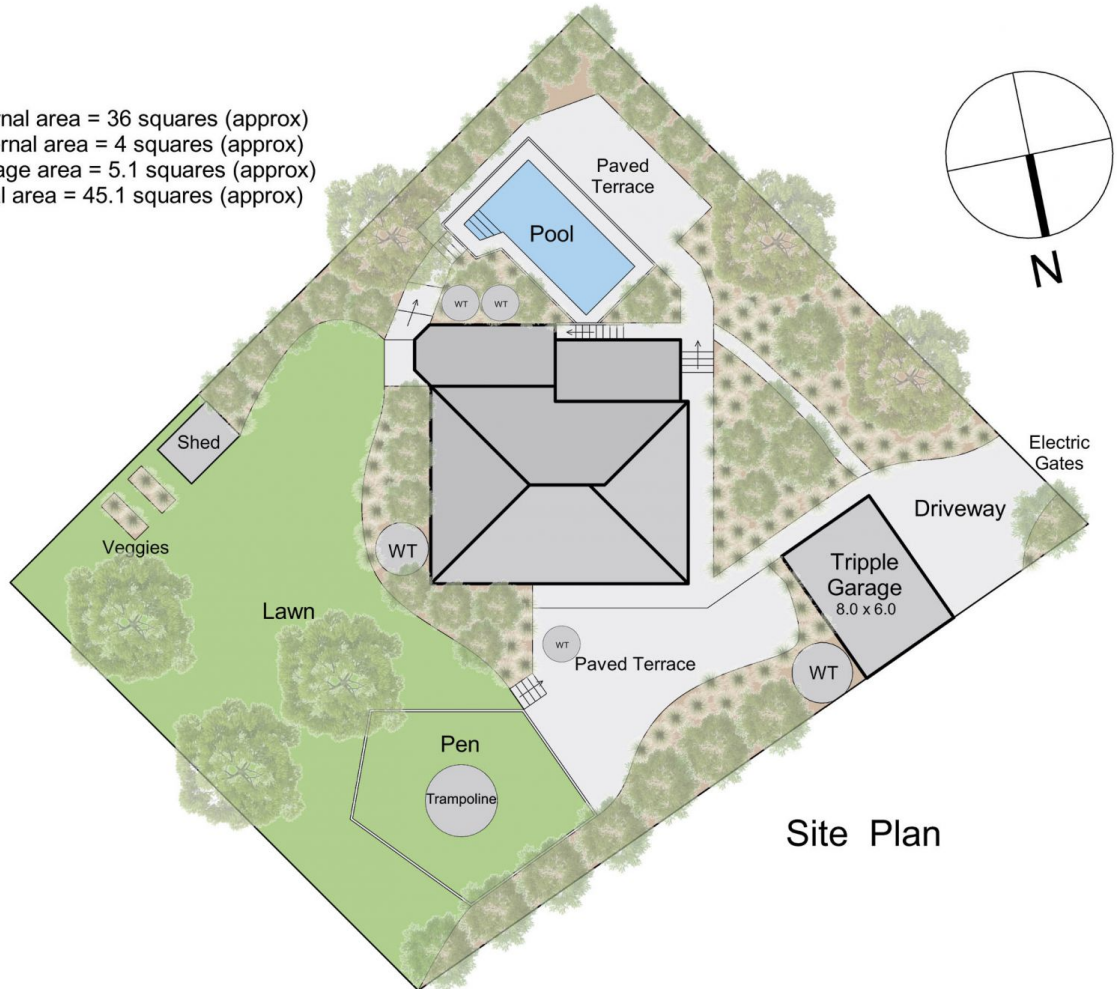


**Karen Blanchard**  
0397872422

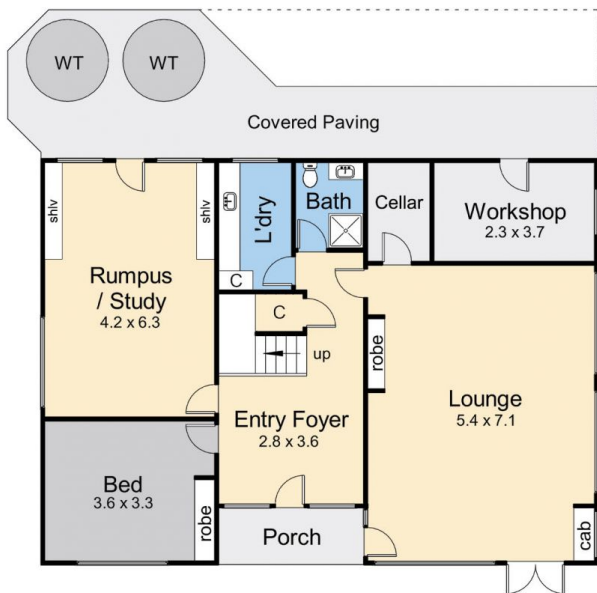
[For full version visit the website](#)



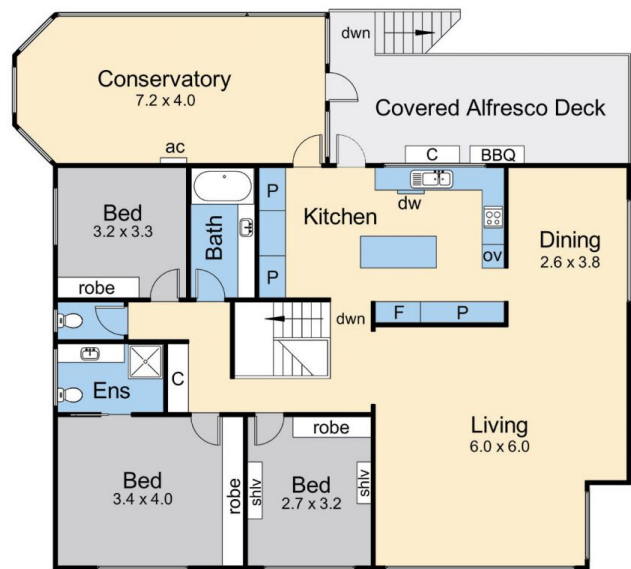
Internal area = 36 squares (approx)  
 External area = 4 squares (approx)  
 Garage area = 5.1 squares (approx)  
 Total area = 45.1 squares (approx)



Site Plan



Lower Floor



Upper Floor

### 3 Batman Avenue, Mount Eliza

This floorplan is for illustration purposes only and no warranty is given to its accuracy. Purchasers are advised to carry out their own investigations. Produced by **realitywriters** (03) 5970 2222