



626 Esplanade MORNINGTON VIC

4 🛏 2 🚿 2 🚗

Discover an exceptional coastal lifestyle at 626 Esplanade, Mornington. This refined beachside residence offers four expansive bedrooms and two meticulously appointed bathrooms, providing the perfect space for family living. A dual-lounge layout, complemented by a thoughtfully integrated elevator, ensures both functionality and elegance throughout.

Step outside to the impressive full-width balcony, where panoramic 180-degree views of Port Phillip Bay create an unforgettable backdrop. The open-plan upper level features a sophisticated fireside lounge and dining area, seamlessly connected to a state-of-the-art Miele kitchen with luxurious stone countertops. This space is ideal for both intimate gatherings and grand entertaining.

[For full version visit the website](https://www.mcewingpartners.com)

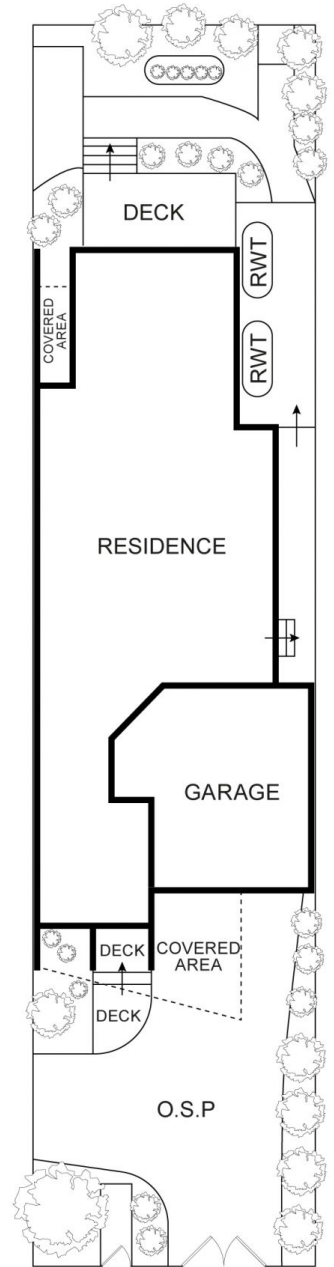
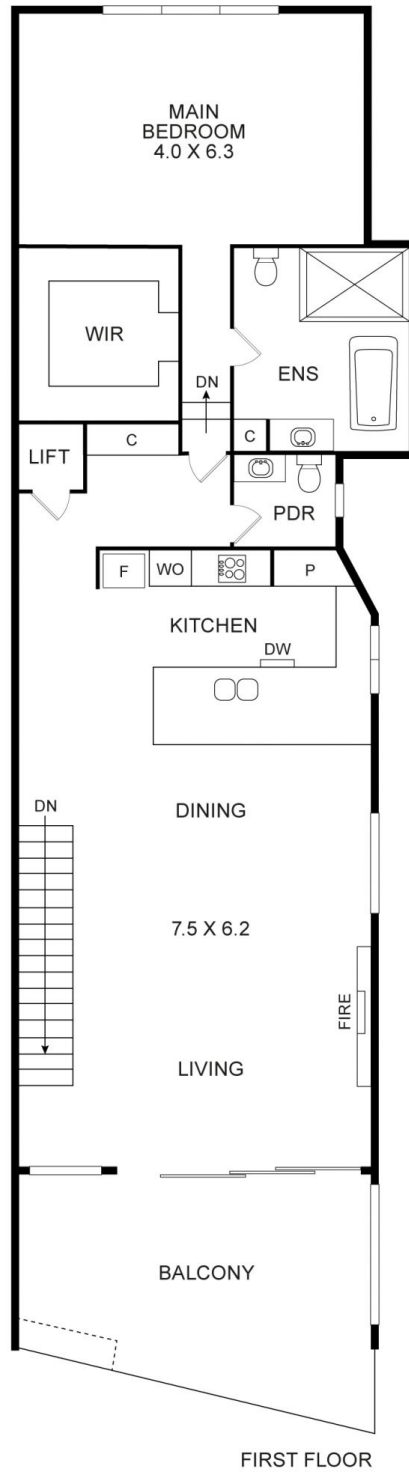
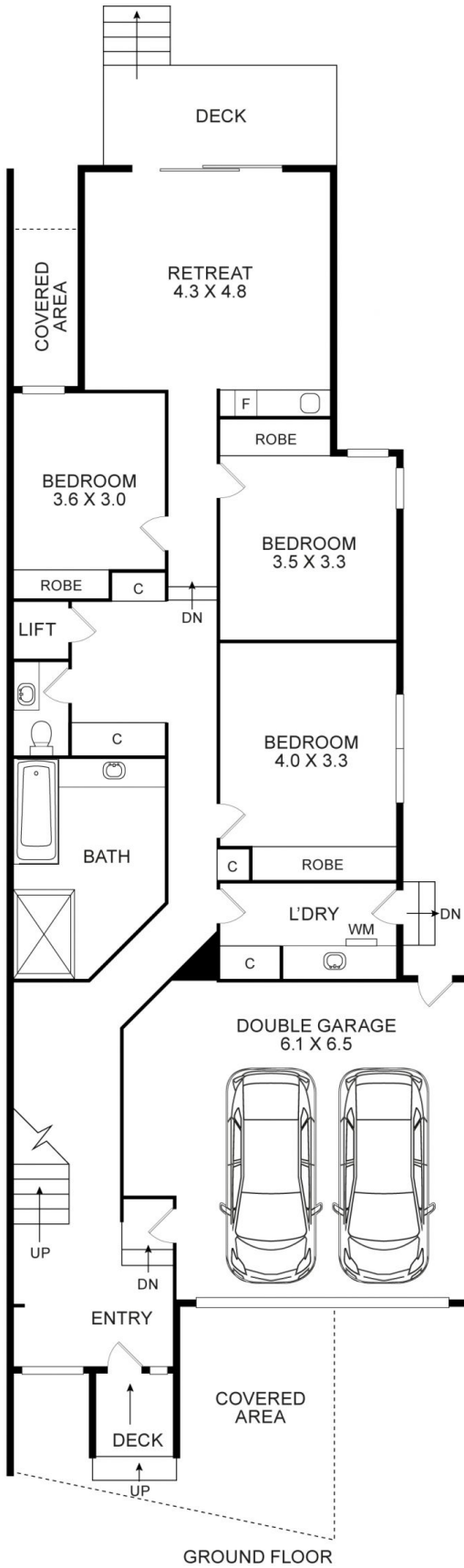
Type : Townhouse
Price : \$2,200,000 - \$2,400,000
Land Size : 363 sqm
View : <https://www.mcewingpartners.com/sale/vic/mornington-peninsula/mornington/residential/townhouse/8282552>



Dean McPherson
0359754555



Grace Green
0359754555



626 Esplanade, Mornington



NOTE: Every precaution has been taken to verify the accuracy of the above details. However, prospective purchasers or tenants are advised to make their own enquiries. All furniture shown are for illustration only.