



19 Capri Drive MOUNT MARTHA VIC

5 🛏 3 🚗 3 🚗

A sparkling bay vista as far as the eye can see, this luxury coastal home takes every opportunity to lap up a sensational outlook where you can watch the ships glide gracefully by and the twinkling coastal lights that put on a dazzling show as day turns to dusk. Set on nearly half an acre, the modern contemporary home is spread over four beautifully zoned levels, while brilliant white stone counters create a striking contrast against beautiful warm spotted gum floors. An impressive entry shows off the full scope of the home with stairs leading up to sleeping quarters and a lounge with broad bay views, while other stairs lead down to a spectacular open plan lounge and dining room where large windows take in the beautiful blue vista and a row of concertina glass doors let the room freely merge with an equally large covered alfresco deck. Outside, a sunny

Type : House
Price : \$ 3,100,000
Land Size : 1973 sqm
View : <https://www.mcewingpartners.com/sale/vic/mornington-peninsula/mount-martha/residential/house/8271860>

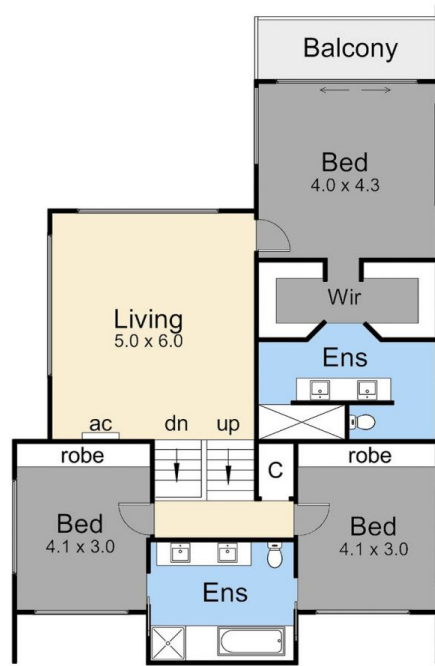


Dean Phillips
0359754555

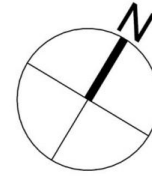


Grace Green
0359754555

[For full version visit the website](#)



Upper Floor

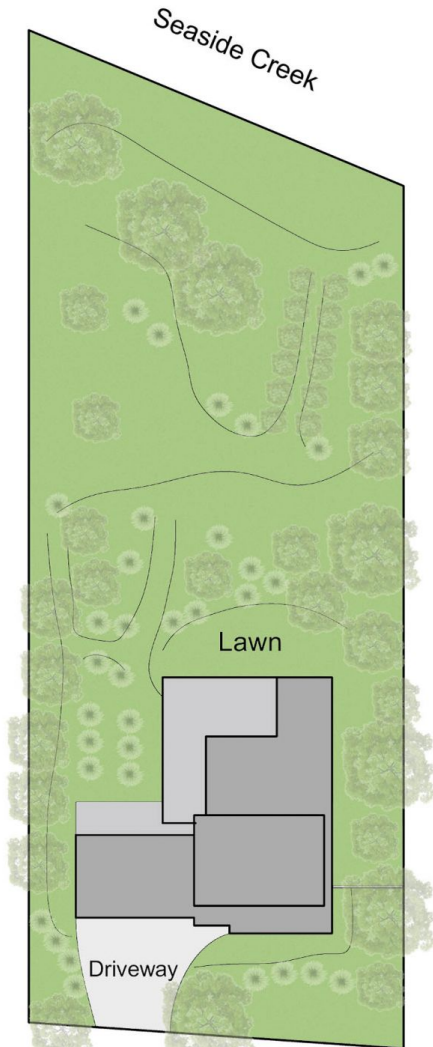


Internal Living Area - 31.7 squares
 Garage - 5.9 squares
 Alfresco - 4.1 squares

Total - 41.7 squares (approx)



Lower Floor



Site Plan

19 Capri Drive, Mount Martha

This floorplan is for illustration purposes only and no warranty is given to its accuracy. Purchasers are advised to carry out their own investigations. Produced by **realitywriters** (03) 5970 2222