



## 16-18 Rannoch Avenue MOUNT ELIZA VIC

6 🏠 3 🚗 2 🚗

Offering grand family living steps from Ranelagh Beach and spread across two titles on 1563sqm, privilege and position combine to create an unparalleled coastal lifestyle amid stunning manicured gardens and gentle bay breezes. Featuring up to six bedrooms, a pool and spa, lush lawns, box hedge gardens and stunning white roses lining a semi-circular driveway that sweeps past an entry portico, this is a vision of timeless traditional opulence in one of Mt Eliza's most sought-after streets. Superbly maintained and presented, a double height formal entry provides an immediate sense of the home's proportions with a huge formal lounge with open fireplace and separate formal dining room, as well as a sprawling family room with an atrium ceiling opening to the very private pool and spa area beneath shady trees - perfect for long, hot summer days.

[For full version visit the website](https://www.mcewingpartners.com/sale/vic/bayside/mount-eliza/residential/house/8268016)

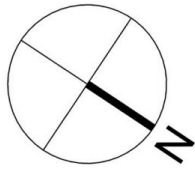
**Type** : House  
**Price** : CONTACT AGENT  
**Land Size** : 1563 sqm  
**View** : <https://www.mcewingpartners.com/sale/vic/bayside/mount-eliza/residential/house/8268016>



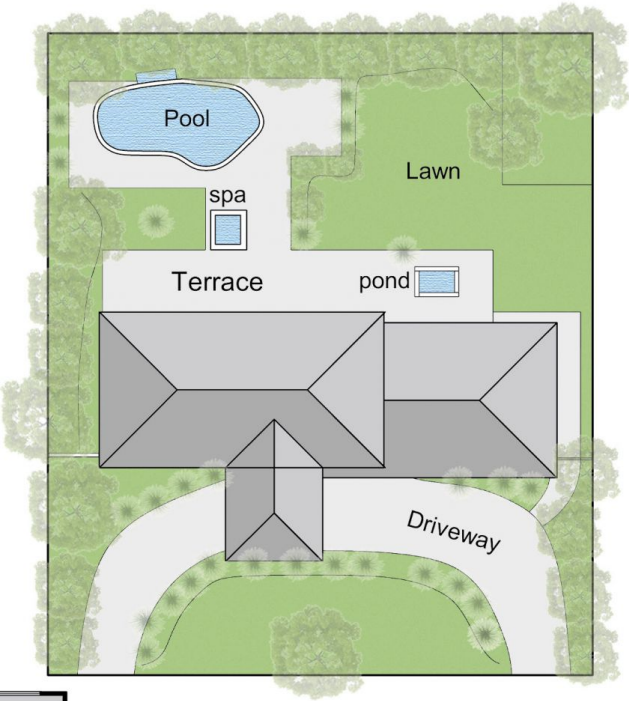
**Quentin McEwing**  
0397872422



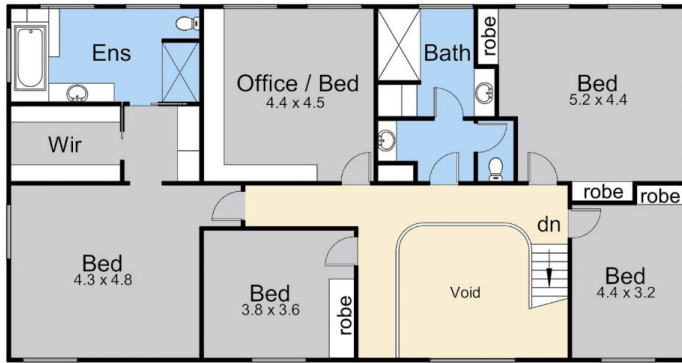
**Kelsi Culhane**  
0397872422



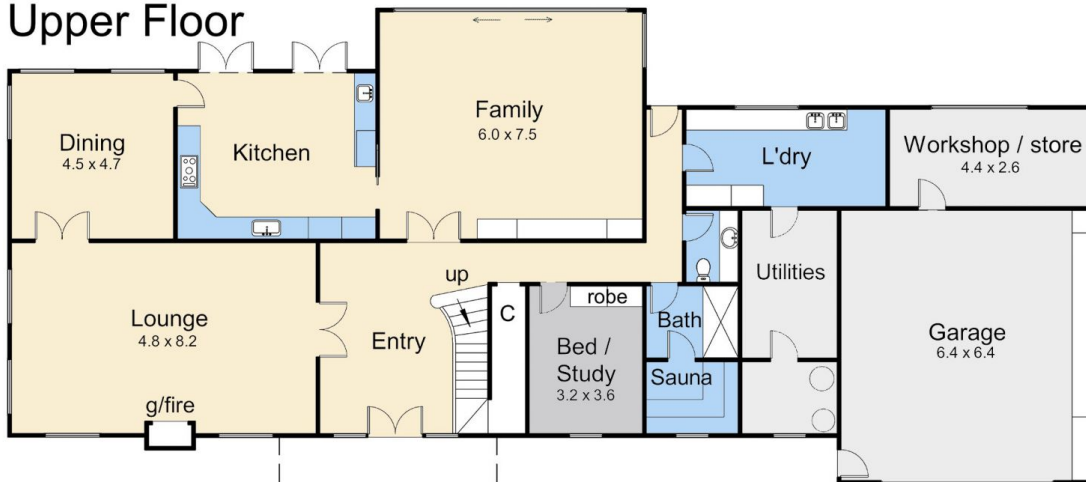
Internal Living Area - 48.4 squares  
 Garage - 5.9  
**Total - 54.3 squares (approx)**



Site Plan



Upper Floor



Lower Floor

Carport

## 16-18 Rannoch Avenue, Mount Eliza

This floorplan is for illustration purposes only and no warranty is given to its accuracy. Purchasers are advised to carry out their own investigations. Produced by **realitywriters (03) 5970 2222**