

9/7 Trehitt Court DROMANA VIC

2 🚗

Perfectly situated just moments from Peninsula Link access at the end of a quiet court, this contemporary warehouse boasts expansive internal floor space, a mezzanine level that includes dedicated office space and bathroom, and two allocated car parks, distinguishing it as the premier property in this sought-after enclave.

Boasting approximately 157m² of factory space, the property comes with a kitchenette, a dedicated storage room/workshop, a mezzanine level with office, and restroom facilities. Steel fencing, automated front gates, and an alarm system ensure security and privacy, while a roller door and pedestrian door provide direct factory access.

Type : Industrial
Price : \$690,000 - \$750,000
Building Size : 195 sqm
Land Size : 157 sqm
View : <https://www.mcewingpartners.com/sale/vic/mornington-peninsula/dromana/commercial/industrial/8267578>

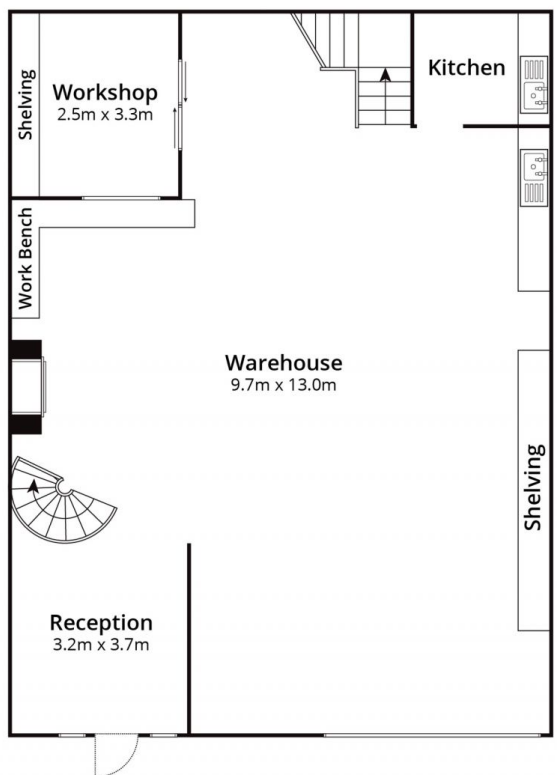


Dean Phillips
0250754555

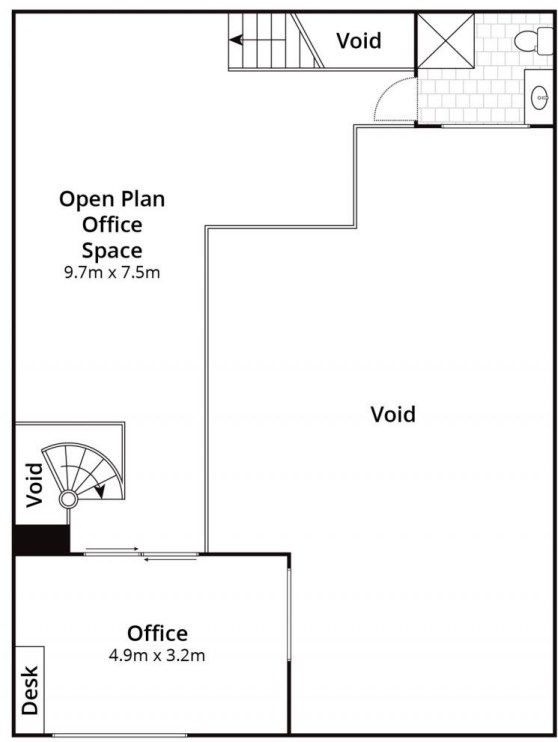


Dean McPherson
0250754555

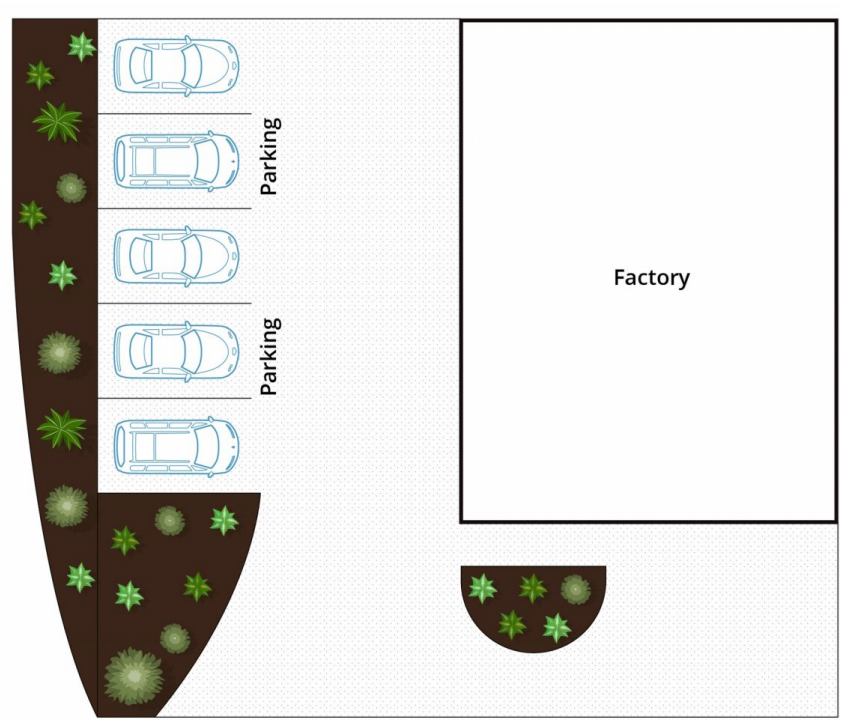
[For full version visit the website](https://www.mcewingpartners.com)



Ground Floor



Mezzanine Floor



Site Plan

Approx Factory Area 195m²
Approx Land Area 157m²

Whilst bwr.com.au has made every attempt to ensure the accuracy of the floor plan contained here, measurements are approximate and no responsibility is taken for any error, omission, or mis-statement. This plan is for illustrative purposes only.

9/7 Trehwitt Court, Dromana