



15 Inglis Street MORNINGTON VIC

3 1 1

Perched in the coveted beauty of Beleura Hill, this enchanting coastal retreat weaves together the grace of classic design with the ease of modern living, all just a gentle walk from the sun-kissed sands of Mills Beach and the lively buzz of Main Street.

Introduced by established gardens and a return driveway, the three-bedroom layout beckons with its elegant front portico and charming French windows. Inside, the heart warms as polished hardwood floors and elevated ceiling heights dress a dedicated lounge, a sunlit meals area and galley kitchen, adorned with modern appliances and rear garden views.

A Wisteria-draped deck alfresco extends summertime

[For full version visit the website](#)

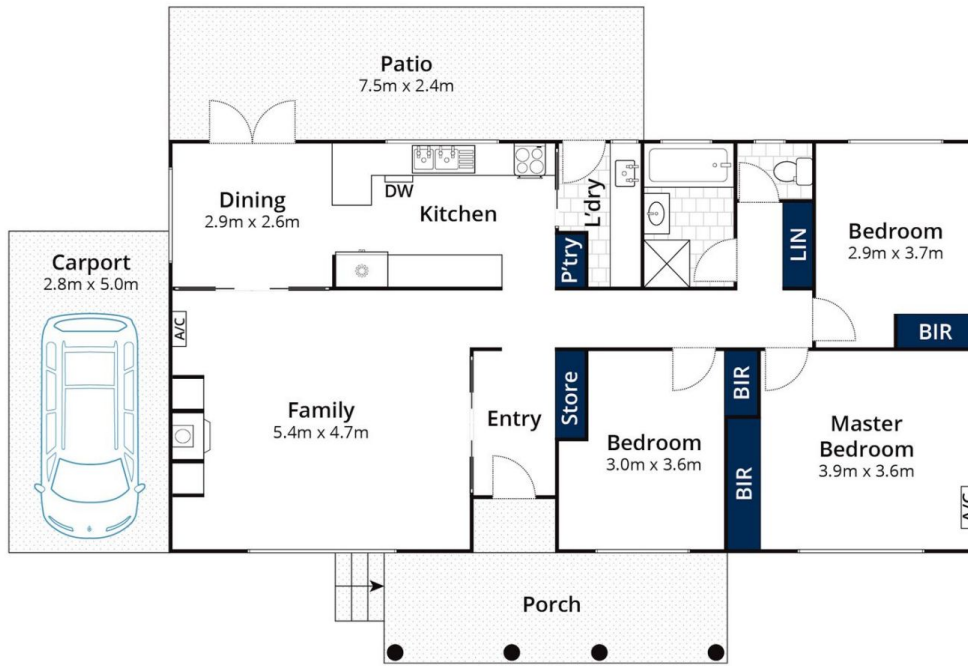
Type : House
Land Size : 945 sqm
View : <https://www.mcewingpartners.com/sale/vic/mornington-peninsula/mornington/residential/house/8267096>



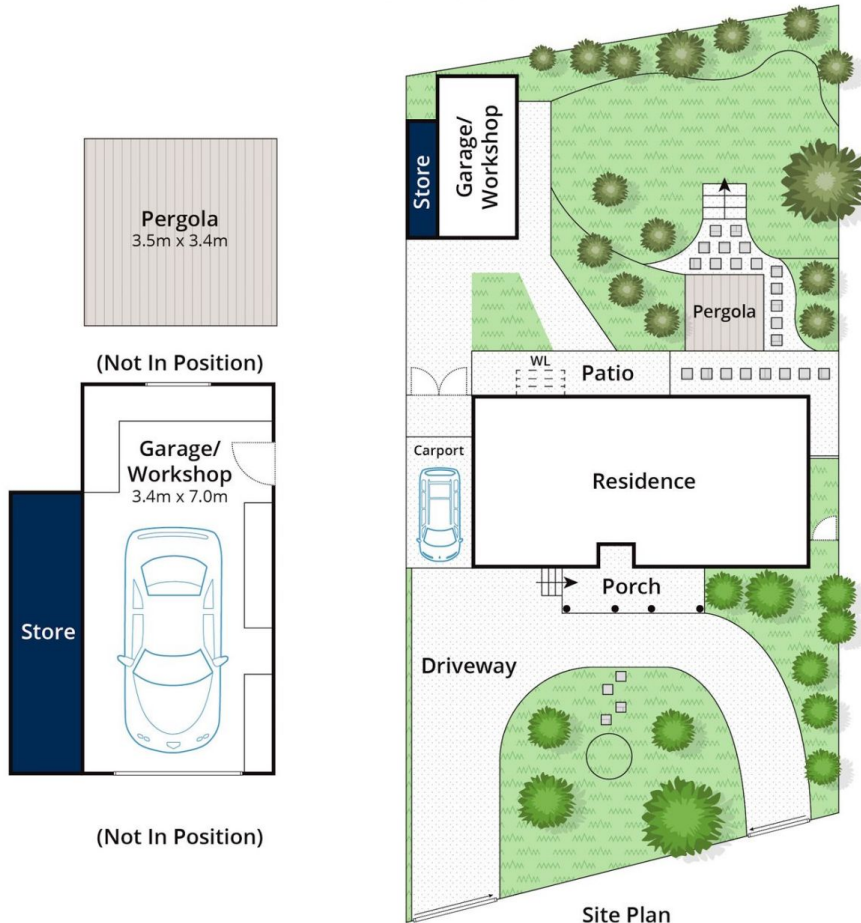
Lisa Bendle
0359754555



Dean Phillips
0359754555



Ground Floor



Site Plan

Approx House Area 120m²
Approx Land Area 945m²

Whilst bwr.com.au has made every attempt to ensure the accuracy of the floor plan contained here, measurements are approximate and no responsibility is taken for any error, omission, or mis-statement. This plan is for illustrative purposes only.

15 Inglis Street, Mornington