



20 Butler Avenue MORNINGTON VIC

5 🛏 3 🚿 2 🚗

Distinguished design and a dress-circle address form the luxury basis of this breathtaking tri-level home, where bespoke finishes and magnificent scale capture an unsurpassed level of sophistication. With spectacular bay and peninsula aspects the crescendo to visionary interiors and an exquisite poolside lifestyle, enjoy the prestige of Beleura Hill and the convenience of a beachside address.

Type : House
Price : \$2,650,000 - \$2,900,000
Land Size : 980 sqm
View : <https://www.mcewingpartners.com/sale/vic/mornington-peninsula/mornington/residential/house/8263871>

Embellishing a practical family footprint of five bedrooms and three bathrooms, a south-facing aspect across every level culminates in a collection of entertaining spaces from casual living with pool table and wet-bar, to the fully-tiled custom concrete swimming pool and private firepit with in-built seating, and monumental top-floor entertaining domain with Silver Travertine-encased Canadian-made gas

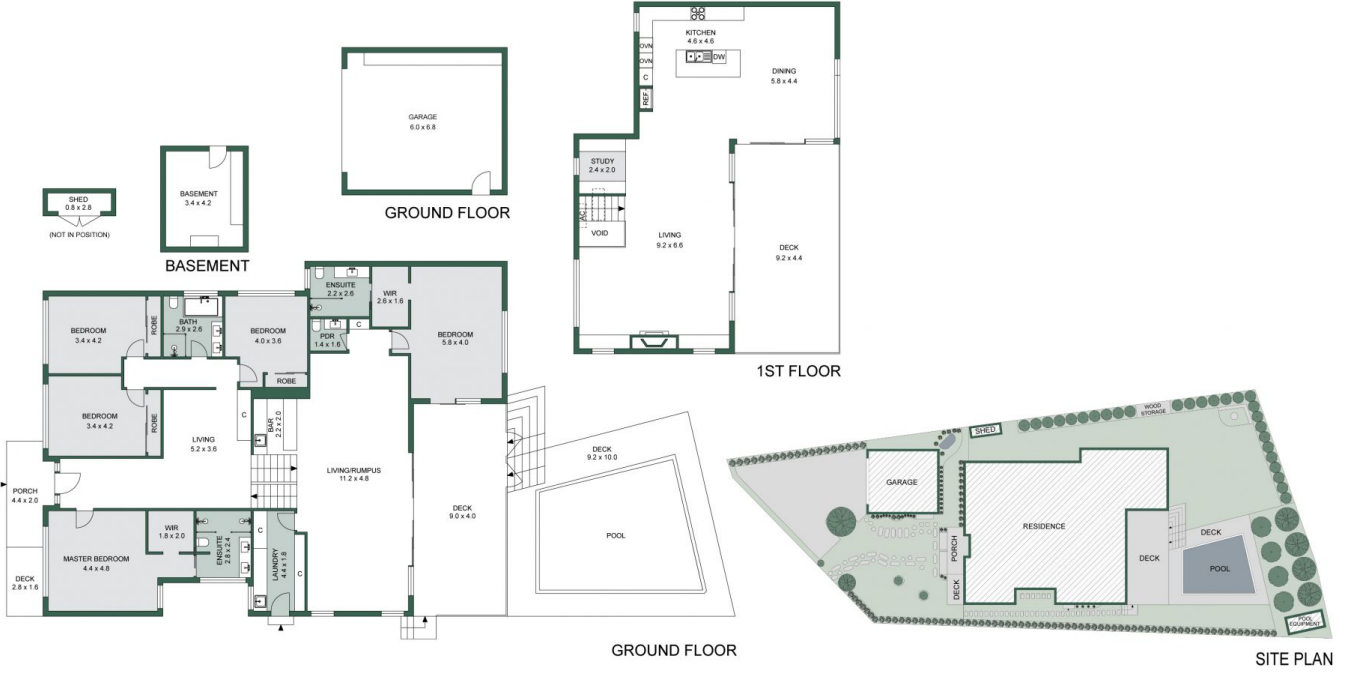
[For full version visit the website](#)



Dean McPherson
0359754555



Dean Phillips
0359754555



The site plan and floor plan are not to scale; measurements are indicative and in metres.
 Bushes and trees are placed for illustration purposes. Plans should not be relied on.
 Interested parties should make and rely on their own enquiries.

