



1137 Stumpy Gully Road MOOROODUC VIC

4 🏠 3 🚗 3 🚗

Positioned within 17.53 acres of pristine bushland, this exceptional Mornington Peninsula property offers an authentic and private lifestyle with significant commercial potential. The rustle of Eucalyptus enhances three delightful cottages that showcase the craftsmanship of the 1930s.

A rustic blend of stone and timber defines the former wedding reception venue, which features a commercial kitchen space, renovated bathroom, grand hall and wet bar. Nearby, a separate main residence unfolds, offering four cosy bedrooms and two renovated bathrooms, along with two unique living zones that invite immediate relaxation. A modern kitchen serves as the heart, styled with stone benchtops, modern electric appliances and a fully-fitted

Type : House
Price : \$4,200,000 - \$4,500,000
Land Size : 17.53 Acres
View : <https://www.mcewingpartners.com/sale/vic/mornington-peninsula/moorooduc/residential/house/8257830>

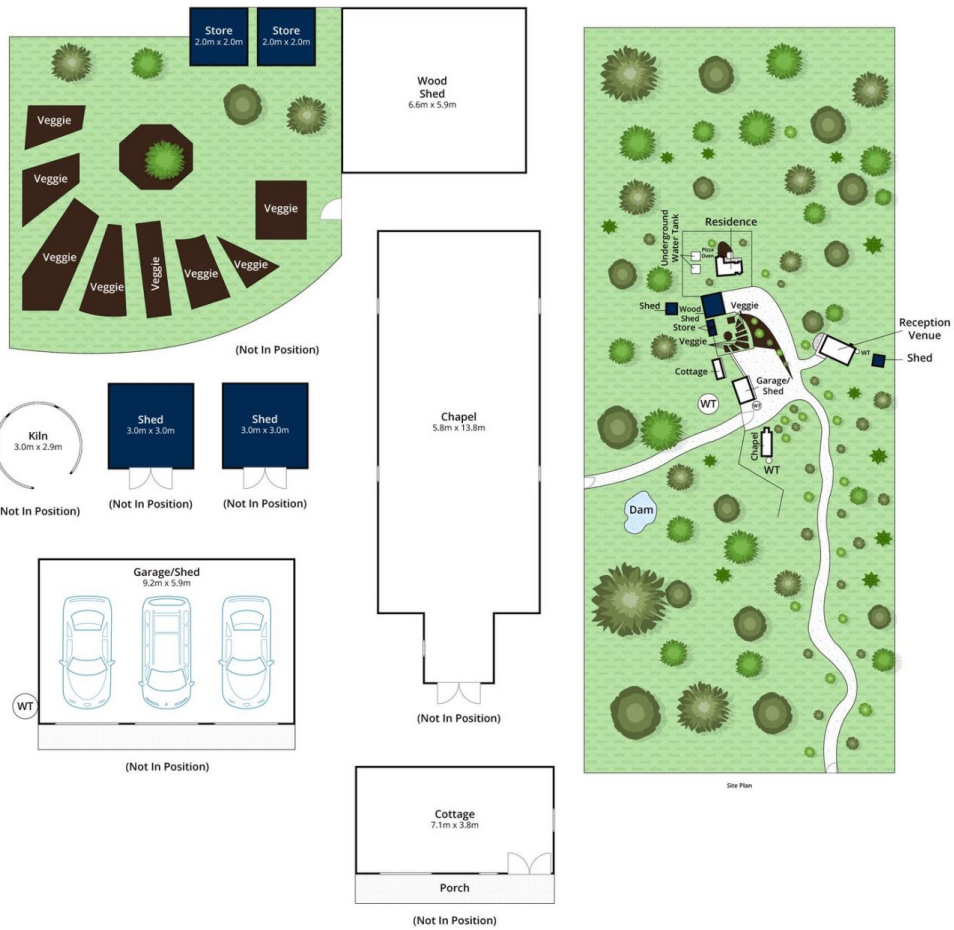
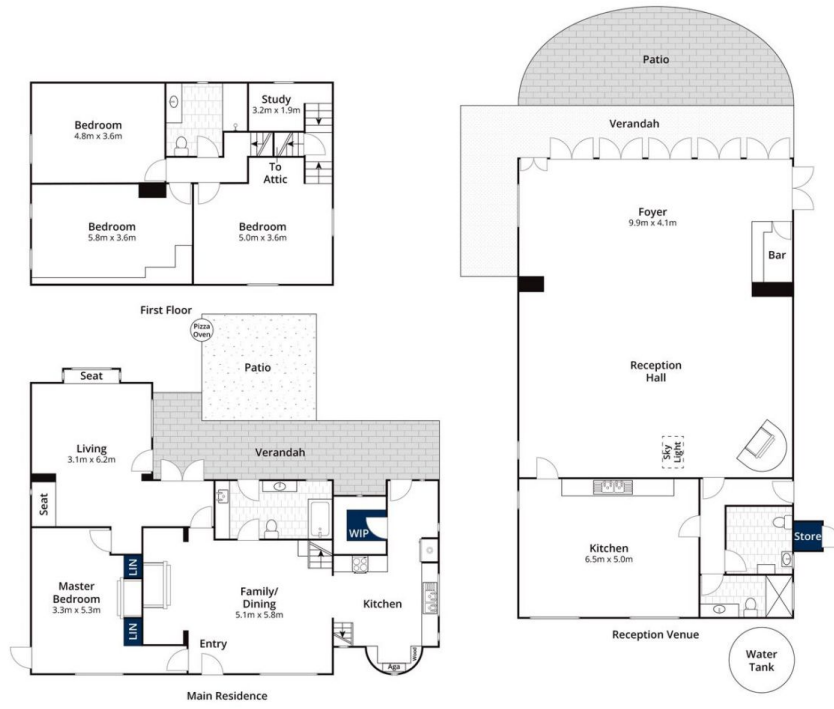
[For full version visit the website](#)



Dean Phillips
0359754555



Alexandra Otte
0359754555



Approx Land Area 17.53 Acres

Whilst bwr.com.au has made every attempt to ensure the accuracy of the floor plan contained here, measurements are approximate and no responsibility is taken for any error, omission, or mis-statement. This plan is for illustrative purposes only.

1137 Stumpy Gully Road, Moorooduc