



10 Brimbrim Crescent MORNINGTON VIC

4 2 2

Impeccably maintained and perfectly positioned, this expansive dual-storey home offers everything a growing family could want, with stunning views over Narambi Station Reserve and its vibrant birdlife. The spacious floorplan features four bedrooms, a study, and multiple living areas designed to cater to every lifestyle need.

Upon entry, you're greeted by a sweeping staircase and three distinct living zones, including a games room with pool table - ideal for leisure, family time, or a home office setup. The open-plan kitchen, featuring a chef's oven, dishwasher, and a breakfast island, is adjacent to the casual dining area, creating a seamless flow for everyday living. Practical touches include internal access from the double remote garage via the laundry, a handy powder

[For full version visit the website](#)

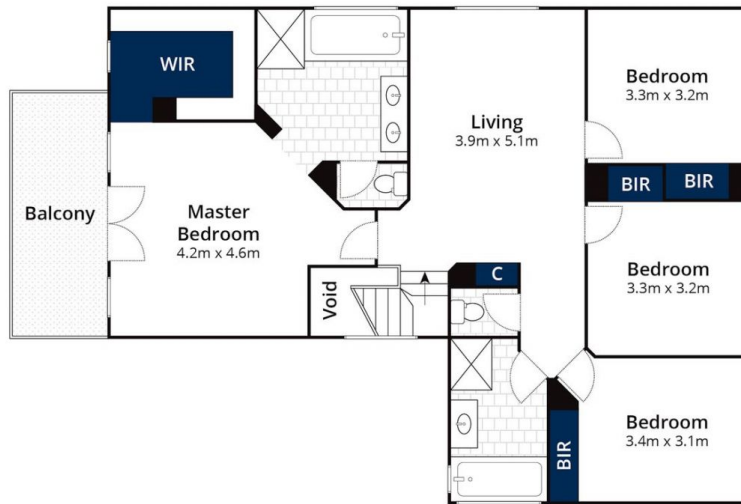
Type : House
Price : \$ 1,290,000
Land Size : 869 sqm
View : <https://www.mcewingpartners.com/sale/vic/mornington-peninsula/mornington/residential/house/8189825>



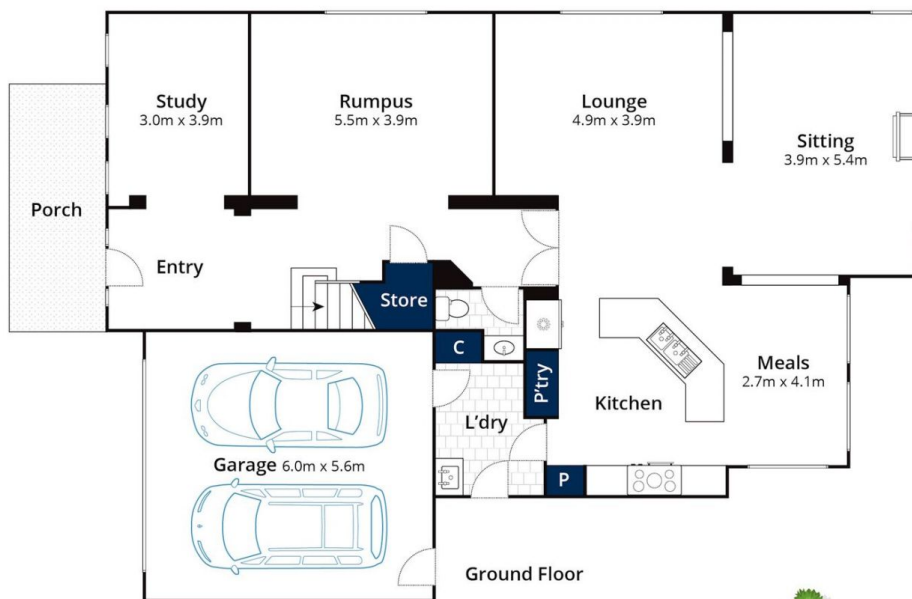
Dean Phillips
0359754555



Indi Fisher
0359754555



First Floor



Ground Floor



Site Plan

Approx House Area 305m²
Approx Land Area 869m²

Whilst bwr.com.au has made every attempt to ensure the accuracy of the floor plan contained here, measurements are approximate and no responsibility is taken for any error, omission, or mis-statement. This plan is for illustrative purposes only.

10 Brimbrim Crescent, Mornington