



3 Lady Beverly Circuit SOMERVILLE VIC

3 2 3

Offering an inviting canvas for both discerning downsizers and lively young families, this three-bedroom 2-bathroom home prioritises comfort with its dual living zones and beautifully lush, low-maintenance gardens. A prized family-friendly pocket sees conveniences to local schools, shops and public transport, making it an ideal choice for those seeking both serenity and accessibility.

Cleverly designed to separate accommodation and entertaining, the home keeps the dual living zones and open dining space fluid yet defined alongside a timber kitchen complete with double wall oven, gas cooktop, dishwasher and breakfast bar. The crackle of an open fireplace is complemented by the push-button convenience of gas ducted heating and a standalone gas fireplace, as

Type : House
Land Size : 670 sqm
View : <https://www.mcewingpartners.com/sale/vic/mornington-peninsula/somerville/residential/house/8158928>

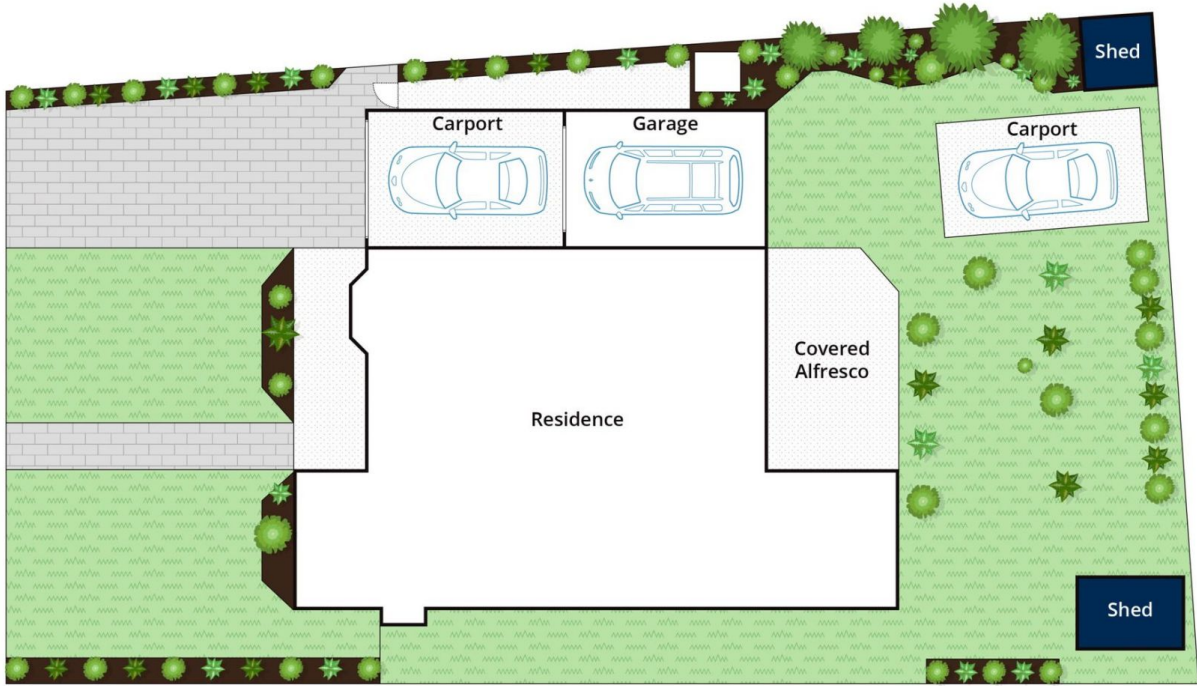
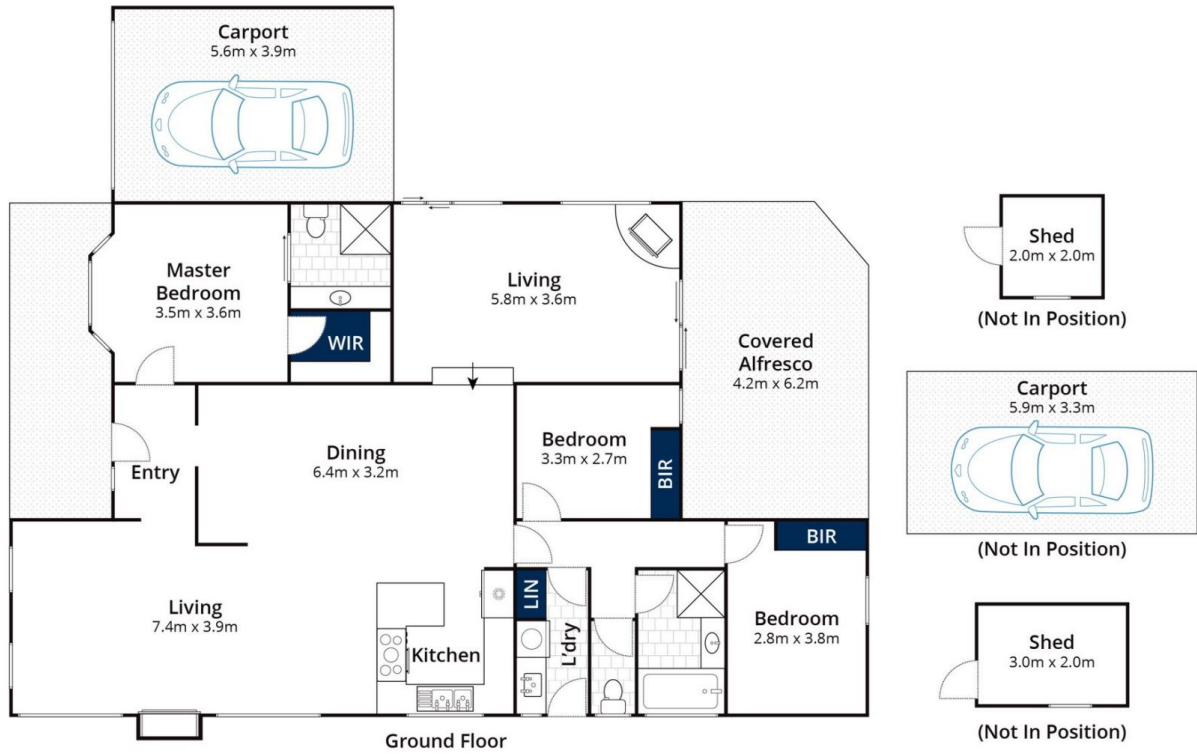


Lisa Bendle
0359754555



Dean McPherson
0359754555

[For full version visit the website](https://www.mcewingpartners.com)



Site Plan

Approx House Area 144m²

Approx Land Area 672m²

Whilst bwr.com.au has made every attempt to ensure the accuracy of the floor plan contained here, measurements are approximate and no responsibility is taken for any error, omission, or mis-statement. This plan is for illustrative purposes only.

3 Lady Beverley Circuit, Somerville