

2/14 Tanti Avenue MORNINGTON VIC

2 2 2

Harmonising the enduring allure of classic architecture with modern sophistication, this distinguished single-level, two-bedroom apartment offers a refreshingly unique perspective on stylish downsizing. Nestled within the established grounds of Sutton Grange, it invites you to embrace a refined lifestyle all within walking distance of Mornington's vibrant Main Street and Shire Hall Beach.

Type : Apartment
Price : \$1,100,000 - \$1,200,000
Land Size : 143 sqm
View : <https://www.mcewingpartners.com/sale/vic/mornington-peninsula/mornington/residential/apartment/8156395>

Exuding timeless elegance through its sturdy triple-brick construction, majestic 3.5-meter ceilings, exquisite leadlight accents, and intricate decorative cornices and ceiling roses, this sun-drenched layout offers a thoughtfully designed environment that nurtures connection. The inviting front lounge and dining area, enhanced by a charming gas log fireplace, seamlessly transitions into an

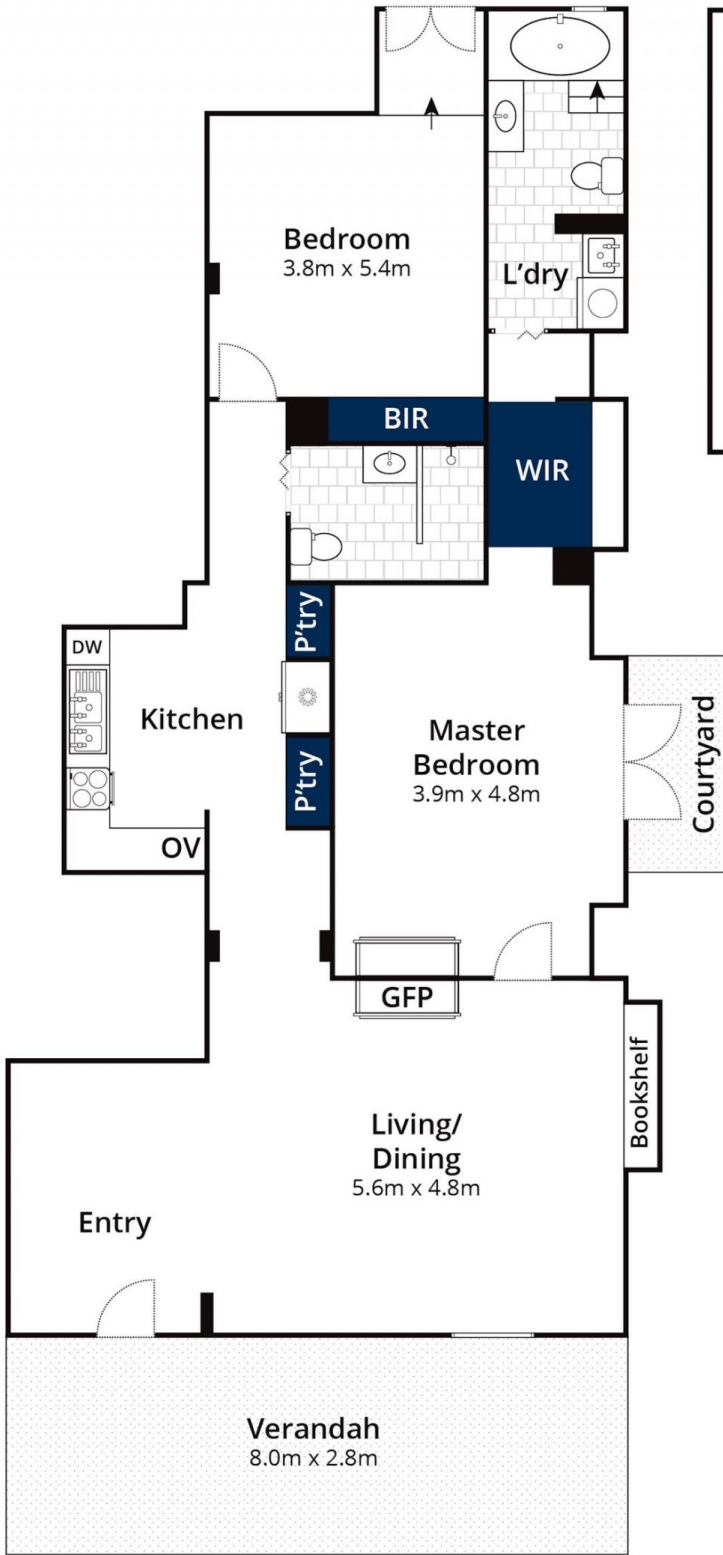
[For full version visit the website](#)



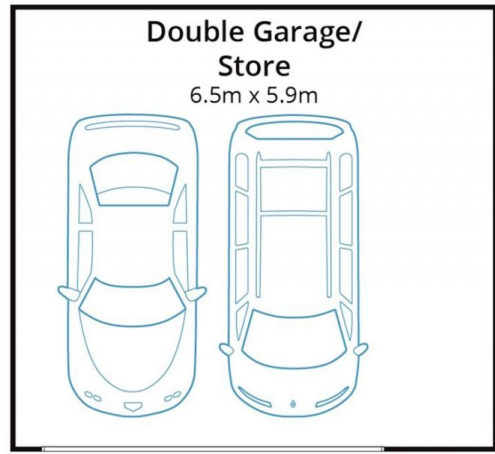
Dean Phillips
0359754555



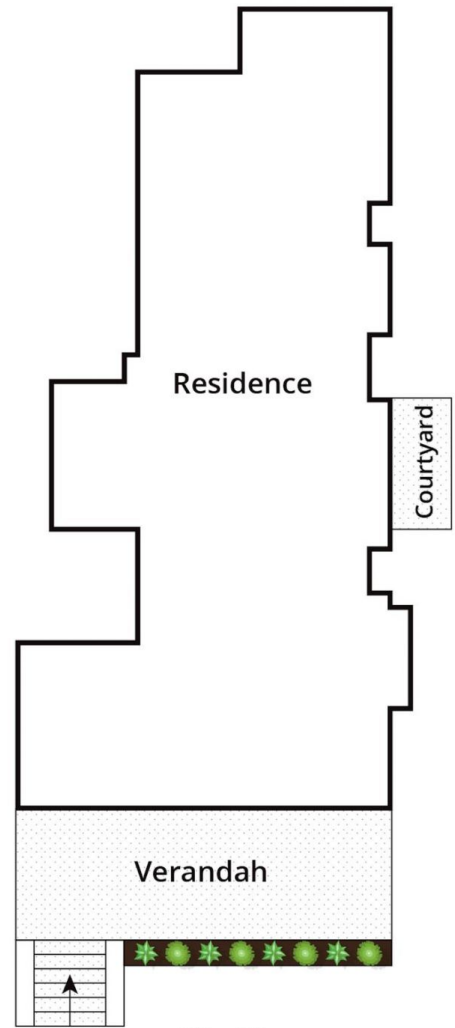
Alexandra Otte
0359754555



Ground Floor



(Not In Position)



Site Plan

Approx House Area 110m²

Approx Land Area 143m²

Whilst bwr.com.au has made every attempt to ensure the accuracy of the floor plan contained here, measurements are approximate and no responsibility is taken for any error, omission, or mis-statement. This plan is for illustrative purposes only.

2/14 Tanti Avenue, Mornington