



2 Woodhaven Road MORNINGTON VIC

5 3 2

Aesthetically captivating with its impressive ceiling heights and clever interpretation of space, this exceptional single-level residence draws upon its high-level craftsmanship and meticulous detail to offer families a luxurious poolside lifestyle.

Transcending the ordinary with its lavish indoor-outdoor features and landscaped gardens, a contemporary coastal invitation greets with an oversized entry and timeless design. Taking breezy proportions to new heights with 9' ceilings and generous window walls, the home opens to the rear where perfect pool aspects backdrop a large social domain. Stretching Karndean Design flooring, the casual setting includes open living and dining space alongside a marble-finished kitchen with butler's pantry, Liebherr wine

Type : House
Price : \$3,000,000 - \$3,300,000
Land Size : 2171 sqm
View : <https://www.mcewingpartners.com/sale/vic/mornington-peninsula/mornington/residential/house/8154051>

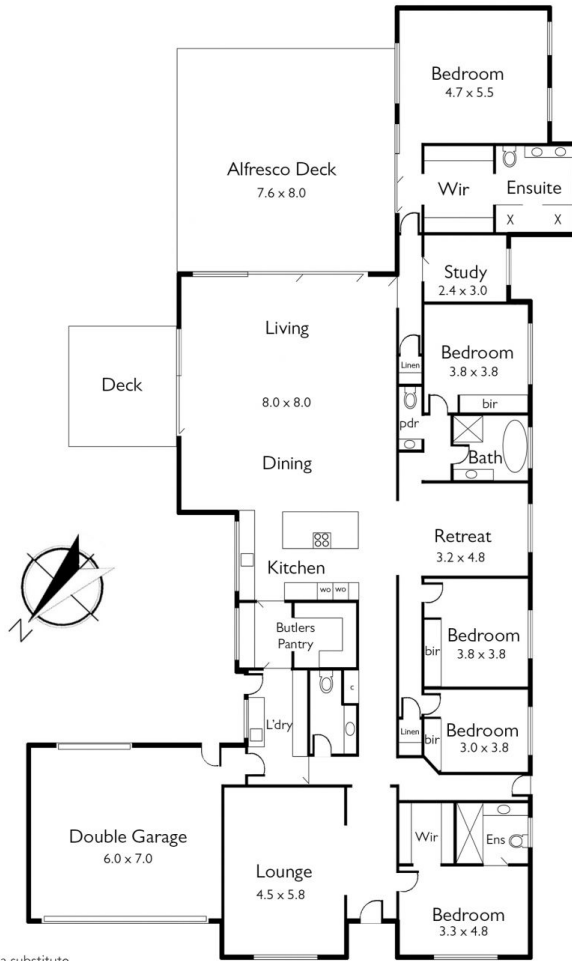
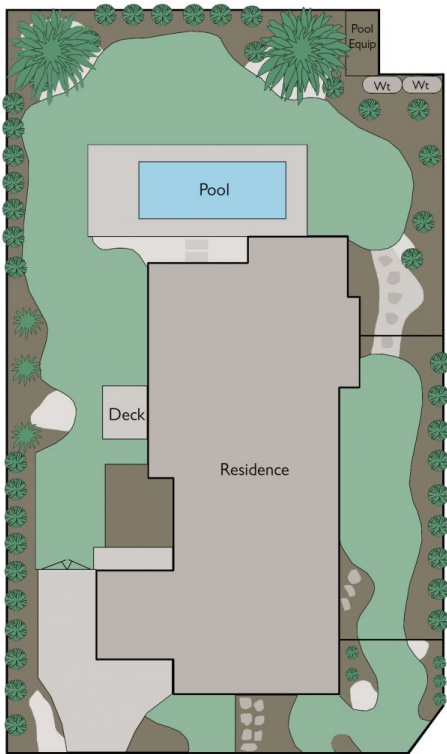
[For full version visit the website](https://www.mcewingpartners.com)



Lisa Bendle
0359754555



Dean Phillips
0359754555



Not to Scale
 This plan, including all measurement estimations, is illustrative only and not a substitute for inspecting and undertaking precise measurements of the property.