

38 Noah Close MORNINGTON VIC

5 3 2

Georgian-style grandeur meets a stylish modern vibe in this five-bedroom residence defined by lavish space and high quality brand new interior finishes. With a spectacular entrance that steals the show with imperial split staircase and ironwork balustrading, the 40 square (approx.) home flaunts a striking open plan that instantly shows through to the entertaining lounge and dining rooms, family living and dining as well as to a larger upper level living zone. Graced with an exquisite new kitchen featuring stone benchtops and a full suite of Neff appliances, the high quality refurbished home also boasts a deluxe alfresco entertaining pavilion among the rear gardens. In an appealing family-friendly estate, just minutes from all seaside Mornington has to offer, a rear pedestrian gate opens onto a tranquil walking trail alongside the heritage

Type : House
Price : \$ 1,300,000
Land Size : 620 sqm
View : <https://www.mcewingpartners.com/sale/vic/mornington-peninsula/mornington/residential/house/8113946>

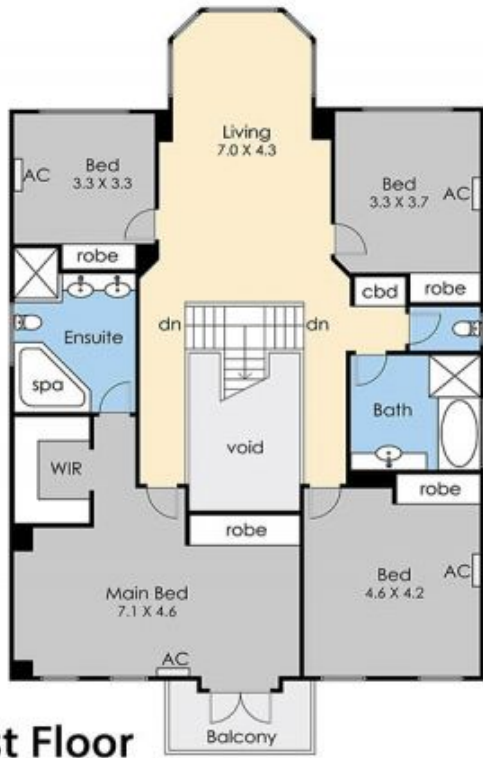
[For full version visit the website](https://www.mcewingpartners.com)



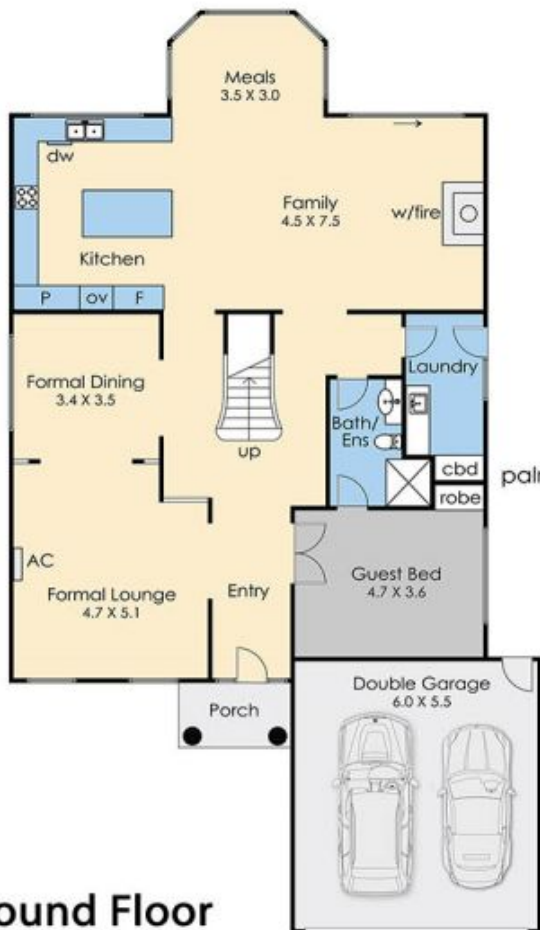
Marcus Gollings
0359754555



Indi Fisher
0359754555

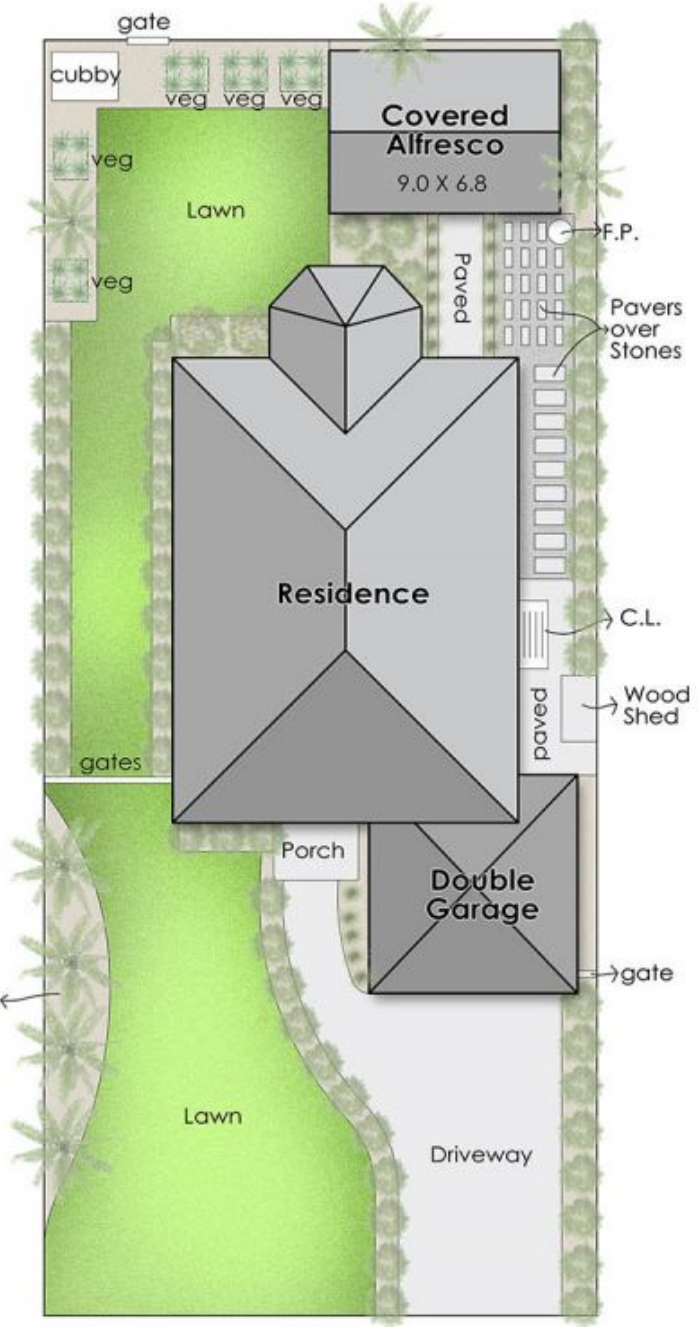
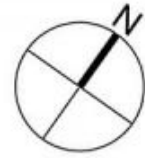


First Floor



Ground Floor

Internal Living Area = 36 squares
 Porch & Balcony = 0.5 sqs
 Garage Area = 4 sqs
 Total Building Area = 40.5 sqs



Site Plan

38 Noah Close, Mornington

This floorplan is for illustration purposes only and no warranty is given to its accuracy. Purchasers are advised to carry out their own investigations. Produced by **realitywriters** (03) 5970 2222