



9/70 Harrap Road MOUNT MARTHA VIC

3 2 2

A treasured position only a short walk from Bentons Square and Dunns Road Reserve, this superbly crafted residence celebrates generous proportions and light-filled spaces, delivering on low-maintenance living ideal for downsizers or investors.

Retaining a remarkable sense of privacy across a floorplan defined by open-plan living and dining, the home opens in both directions to accommodate effortless entertaining with a well-equipped kitchen comprising stone benchtops and superior appliances, walk in pantry and a private yet light-filled courtyard garden and patio.

Quality finishes are highlighted throughout, with privacy remaining key across all three bedrooms. Accompanied by

[For full version visit the website](https://www.mcewingpartners.com/sale/vic/mornington-peninsula/mount-martha/residential/unit/8078035)

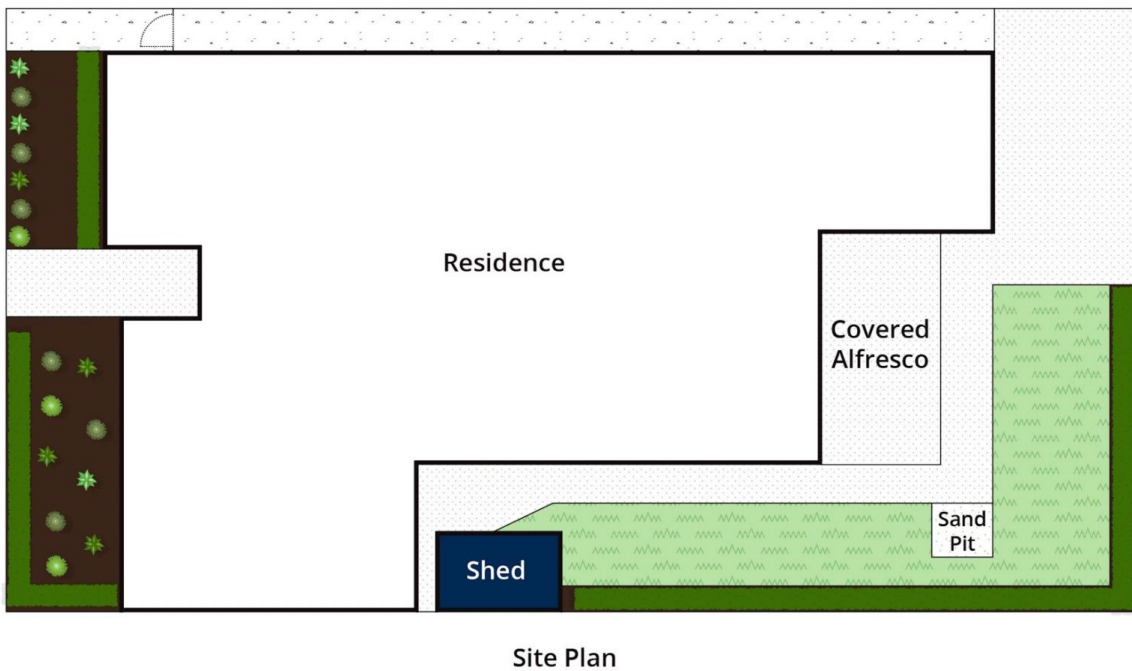
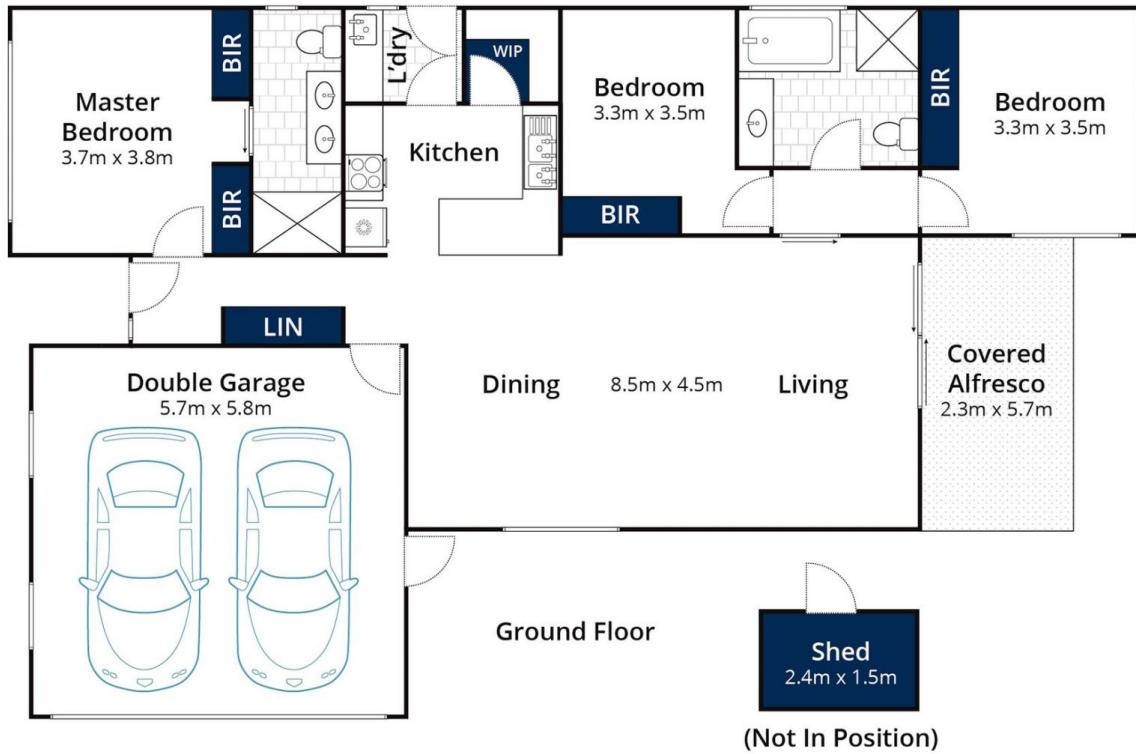
Type : Unit
Land Size : 266 sqm
View : <https://www.mcewingpartners.com/sale/vic/mornington-peninsula/mount-martha/residential/unit/8078035>



Lisa Bendle
0359754555



Dean McPherson
0359754555



Approx House Area 137m²
Approx Land Area 266m²

Whilst bwr.com.au has made every attempt to ensure the accuracy of the floor plan contained here, measurements are approximate and no responsibility is taken for any error, omission, or mis-statement. This plan is for illustrative purposes only.

9/70 Harrap Road, Mount Martha