

## 6 Herbert Street MORNINGTON VIC

4 🚗 2 🚗 10 🚗

Brimming with sophistication, this residence is a sanctuary amidst its private yet lively surroundings, on one of Mornington's most coveted beachside locales. Perfectly designed by renowned architect Leo De Jong.

A grand custom glass entrance reveals the expansive family theatre domain and deck, overlooking a self-maintaining heated pool cocooned by leafy magnolias. Enfolding the ground floor are two large bedrooms with custom painted walls, robes, and carpet central to a main bathroom with warm stone finishes and hydronic heating.

Ascending via lift or central staircase adorned with silk lights from the Middle East to panoramic views of Port Phillip Bay from the living and alfresco areas, including the

[For full version visit the website](https://www.mcewingpartners.com/sale/vic/mornington-peninsula/mornington/residential/house/8001124)

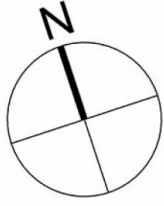
**Type** : House  
**Price** : \$6,500,000 - \$7,150,000  
**Land Size** : 1027 sqm  
**View** : <https://www.mcewingpartners.com/sale/vic/mornington-peninsula/mornington/residential/house/8001124>



**Dean Phillips**  
0359754555



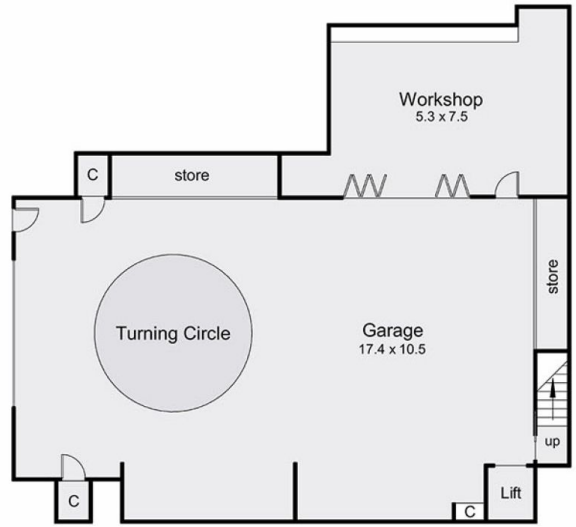
**Alexandra Otte**  
0359754555



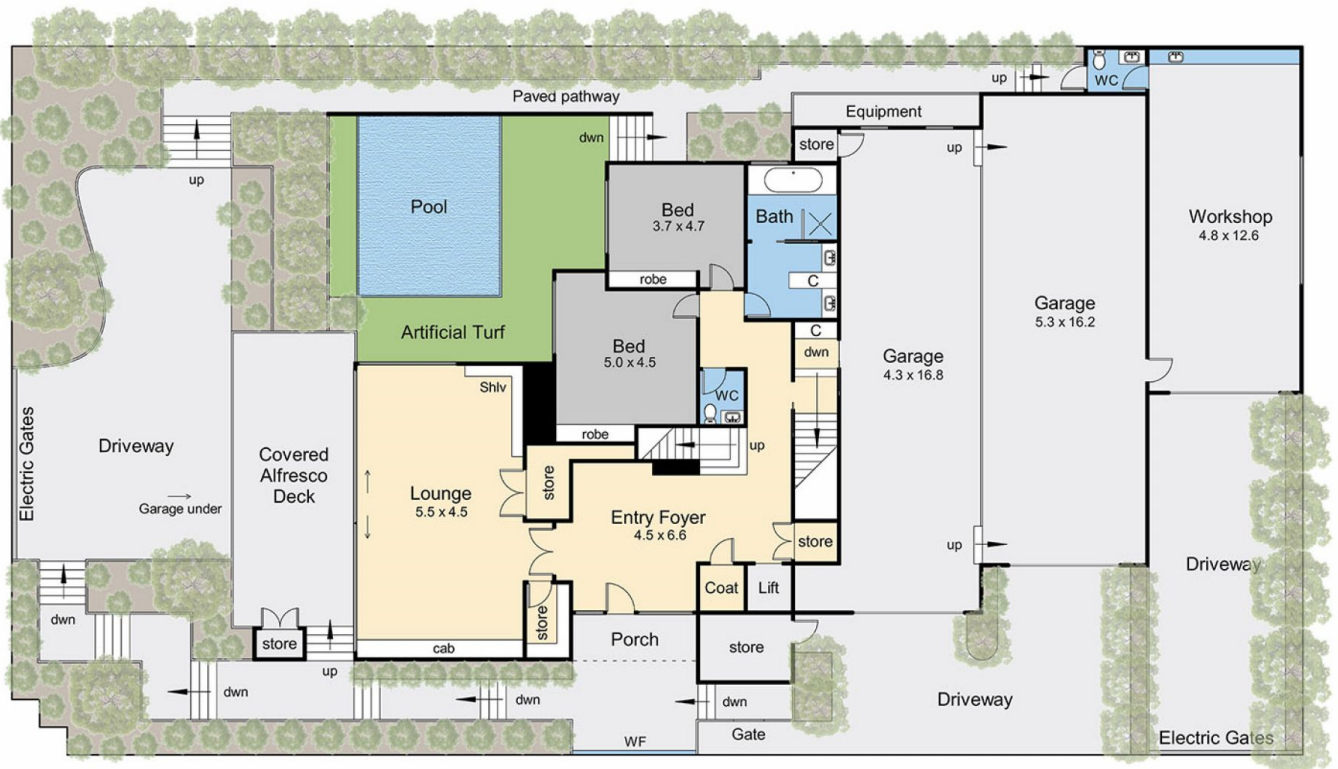
Internal living area = 45.2 squares (approx)  
 Garage areas = 47.9 squares (approx)  
 Deck areas = 10.2 squares (approx)  
 Total area = 103.3 squares (approx)



Upper Level



Lower Level



Entry Level

## 6 Herbert Street, Mornington

This floorplan is for illustration purposes only and no warranty is given to its accuracy. Purchasers are advised to carry out their own investigations. Produced by **realitywriters** (03) 5970 2222