



23 Churchill Road MOUNT MARTHA VIC

4 🚗 2 🚗 2 🚗

Backdropped by spectacular sunsets and passing ships, this breathtaking Hamptons-inspired residence with heated mineral pool, cabana and artist's studio has been sculpted into the elevation of a superb half acre allotment (approx) to capture unparalleled views over the tree canopy to the bay and coastline beyond. Beneath a soaring cathedral ceiling with clerestory windows on the entry level, the residence boasts a culinary kitchen with stone benchtops and quality appliances, while all three living areas are encased in sliding glass doors framing the bay from both levels and opening to a choice of vast alfresco decks. Immaculately landscaped and tiered, the gardens feature a flat lawn area with paths leading to the pool and cabana, while a secluded fire pit area awaits at the bottom of the garden surrounded by lush foliage. Offering a harmonious

Type : House
Price : \$ 2,602,500
Land Size : 1926 sqm
View : <https://www.mcewingpartners.com/sale/vic/mornington-peninsula/mount-martha/residential/house/8001099>



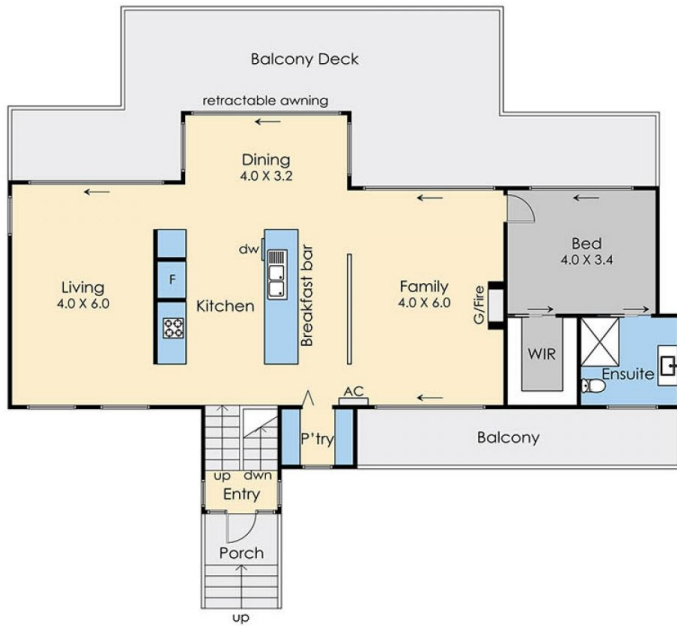
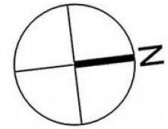
Dean Phillips
0359754555



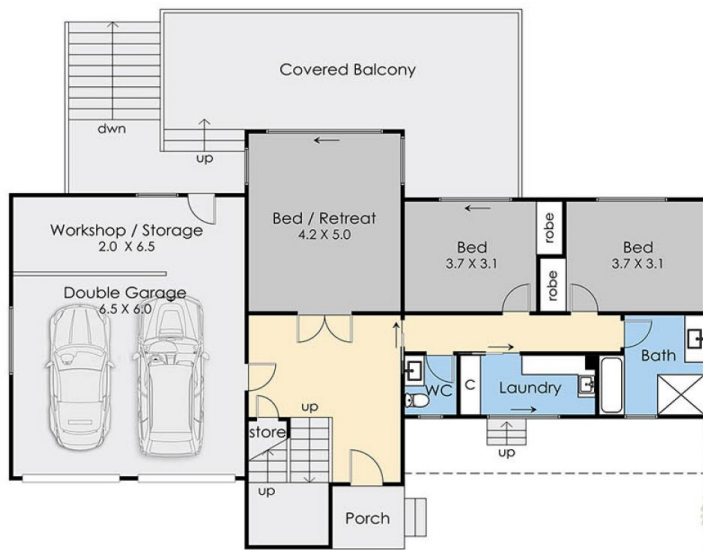
Alexandra Otte
0359754555

[For full version visit the website](https://www.mcewingpartners.com)

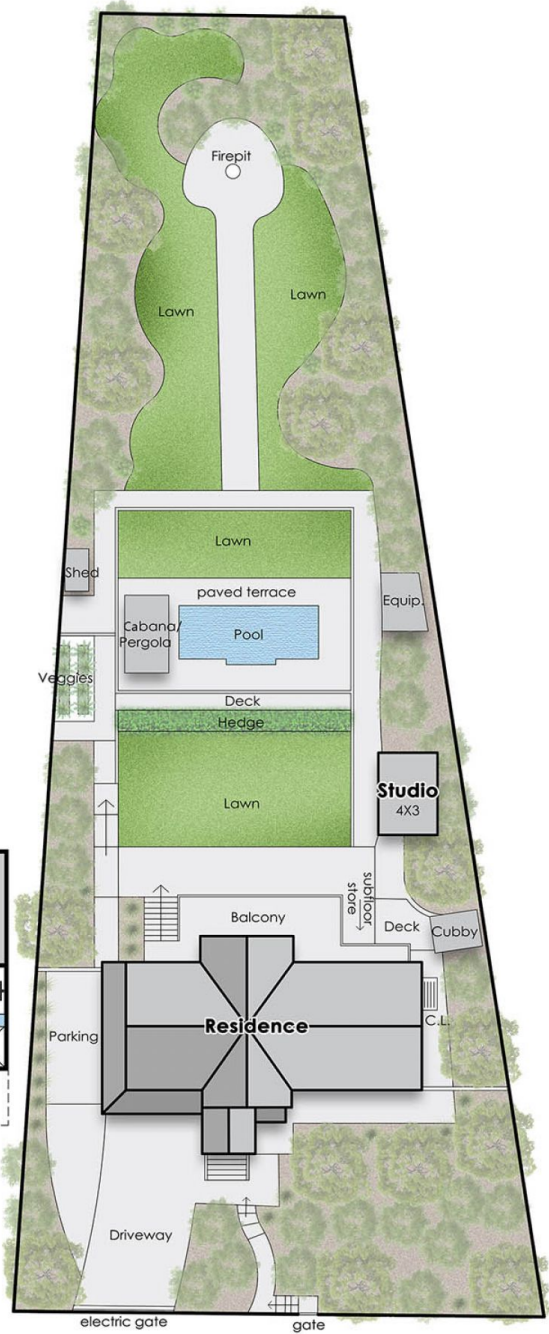
Internal Living Area = 24 squares (approx.)
 Garage Area = 5 squares (approx.)
 Deck Area = 15 squares (approx.)
 Total Area = 44 squares (approx.)



Entry Level



Lower Level



Site Plan

23 Churchill Road, Mount Martha

This floorplan is for illustration purposes only and no warranty is given to its accuracy. Purchasers are advised to carry out their own investigations. Produced by **realitywriters (03) 5970 2222**