

52 Nunns Road MORNINGTON VIC

4 2 2

APPLICATION APPROVED

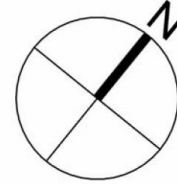
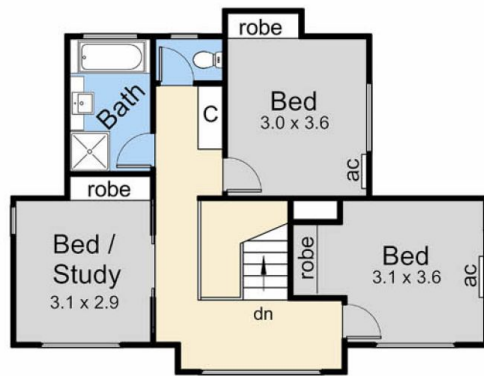
Rejoice in contemporary style moments from Fishermans Beach with this modern four-bedroom town residence set on its own title . With front and rear courtyard gardens, a downstairs master bedroom with ensuite and walk-in robe and a large open plan living area, this is the perfect low-maintenance home to take advantage of Mornington's famous seaside café lifestyle. The kitchen features stone benchtops, stainless steel appliances, glass splashback and walk-in pantry and overlooks a tiled living room and meals area with double sliding doors leading out to a paved alfresco courtyard bathed in northern sun. Upstairs, two bedrooms and a study or fourth bedroom - all with built-in robes - share the main bathroom. Creature comforts include split-system heating airconditioning, a powder

Type : House
Land Size : 288 sqm
View : <https://www.mcewingpartners.com/lease/vic/mornington-peninsula/mornington/residential/house/7947814>



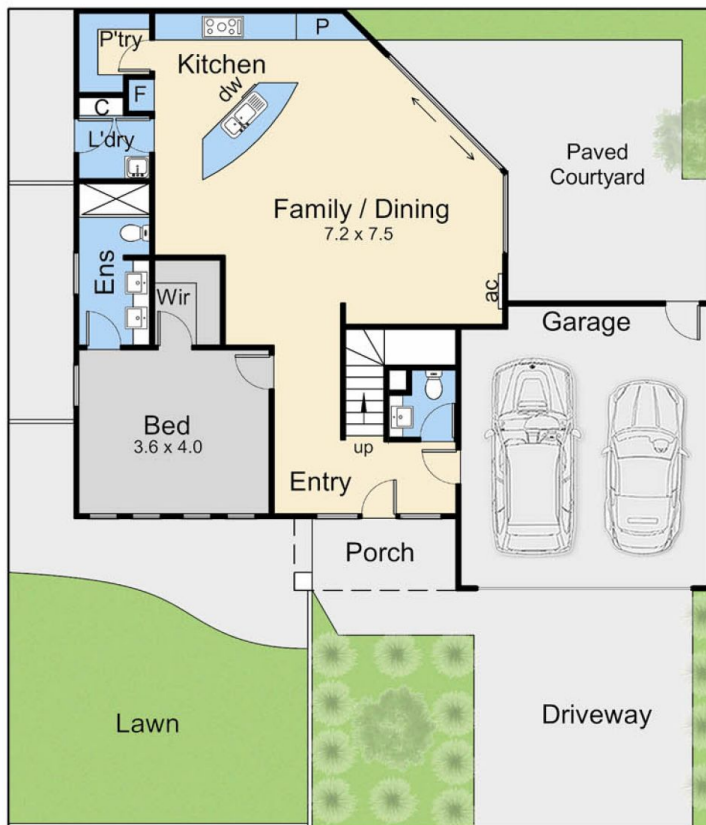
Samantha Stephenson
0397872422

[For full version visit the website](#)



Internal Living Area
17.4 squares

Upper Floor



Lower Floor

52 Nunns Road, Morningside

This floorplan is for illustration purposes only and no warranty is given to its accuracy. Purchasers are advised to carry out their own investigations. Produced by **realitywriters (03) 5970 2222**