



4 Murray Drive POINT LEO VIC

6 2

Nestled in an unbeatable cul-de-sac position, just steps away from the pristine shores of Point Leo beach, this contemporary coastal home offers the ultimate escape. Characterized by its sleek and stylish design featuring natural timber and stone, this residence boasts up to six bedrooms, two bathrooms, and two powder rooms, including a convenient separate guest retreat.

The heart of the home lies in its well-equipped kitchen, complete with a suite of integrated Miele and Bosch appliances. Flowing seamlessly through stacker doors is a covered Al Fresco area, perfect for outdoor entertaining. An inviting family room takes centre stage, featuring a Cheminees Philippe wood fire, enhancing the home's year-round appeal and creating a cozy ambiance.

Whether you prefer lazy days at the beach or wish to catch the waves at Crunchy Point and 2nd Reef, renowned surf breaks, this location offers it all. Enjoy the simplicity of

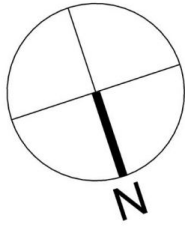
Price : \$3,000,000 - \$3,300,000
Land Size : 601 sqm
View : <https://www.mcewingpartners.com/sale/vic/mornington-peninsula/point-leo/residential/house/7922238>



Dean Phillips
0359754555



Alexandra Otte
0359754555

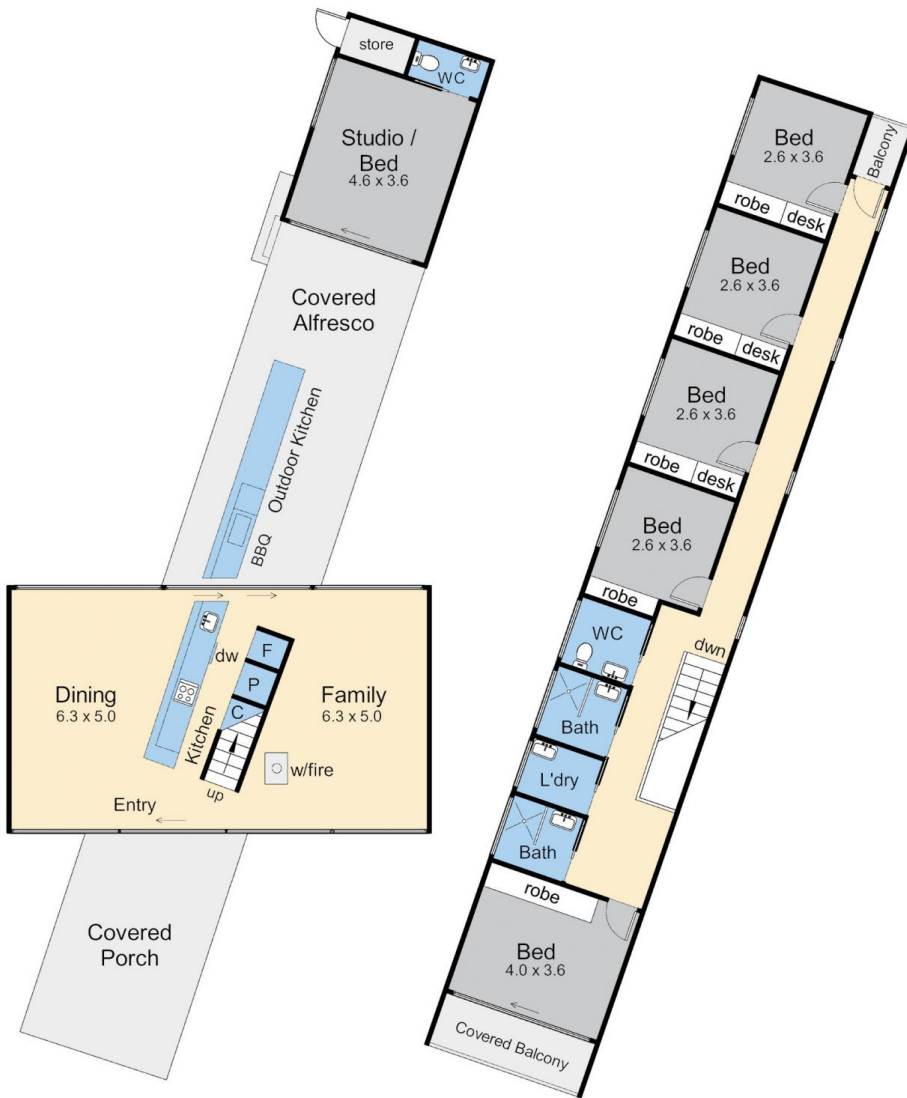


Internal area = 18.5 squares (approx)

External area = 7 squares (approx)

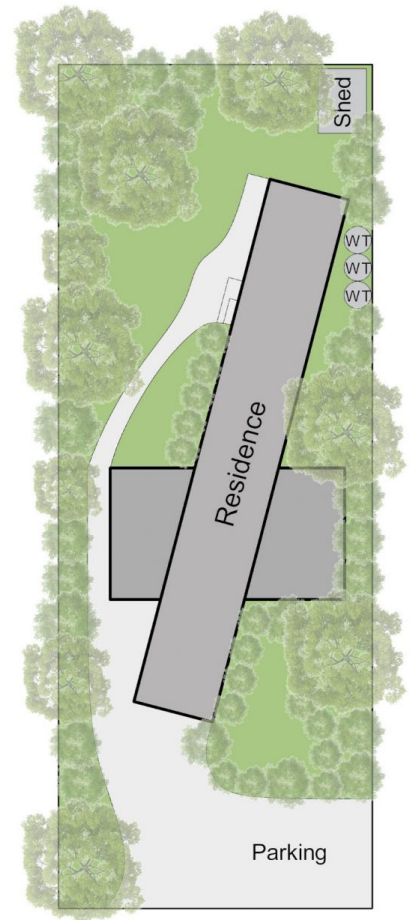
Total area = 25.5 squares (approx)

Land area = 601 sqm (approx)



Lower Floor

Upper Floor



Site Plan

4 Murray Drive, Pt. Leo

This floorplan is for illustration purposes only and no warranty is given to its accuracy. Purchasers are advised to carry out their own investigations. Produced by **realitywriters** (03) 5970 2222