



## 28 Lindenderry Circuit MORNINGTON VIC

5 🏠 3 🚗 3 🚗

A private paradise of grand proportions with an exclusive resort-style ambience, this award-winning, near-new luxury home showcases the pinnacle of perfection for lifestyle lovers on half an acre of tropical-inspired gardens. State-of-the-art with app-controlled Control4 monitoring of everything from the CCTV security system to the pool and spa heating, the residence melds high-end opulence with next-level smart functionality. Crafted around a lush central fernery encased in colossal walls of glass that infuse the interior with natural light and imbue a subliminal connection with nature, the residence wows with a free-flowing floorplan that transports you past expansive open-concept living spaces and an epicurean kitchen with butler's pantry to banks of bifold doors gliding open to a villa-style poolside entertaining area with a built-in barbecue kitchen, alfresco servery, a heated swimming pool, spa and a deluxe pool house. Delivering the most heavenly private resort for

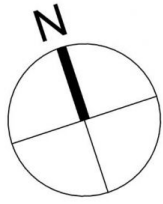
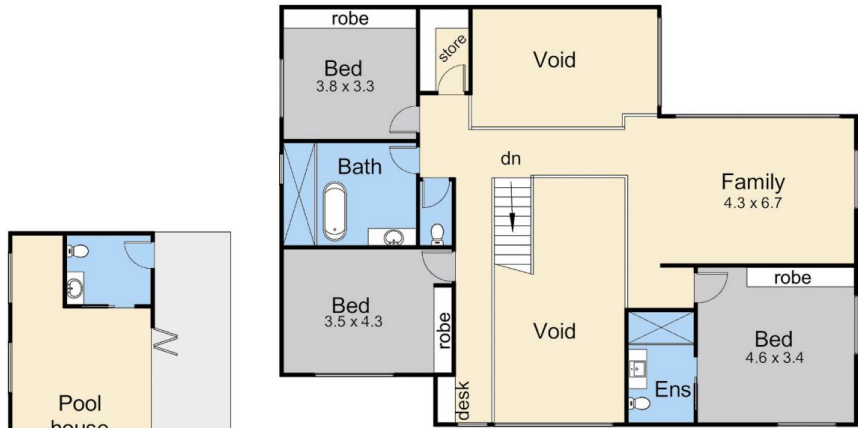
**Price** : \$3,450,000 - \$3,750,000  
**Land Size** : 2016 sqm  
**View** : <https://www.mcewingpartners.com/sale/vic/mornington-peninsula/mornington/residential/house/7914667>



**Dean Phillips**  
0359754555

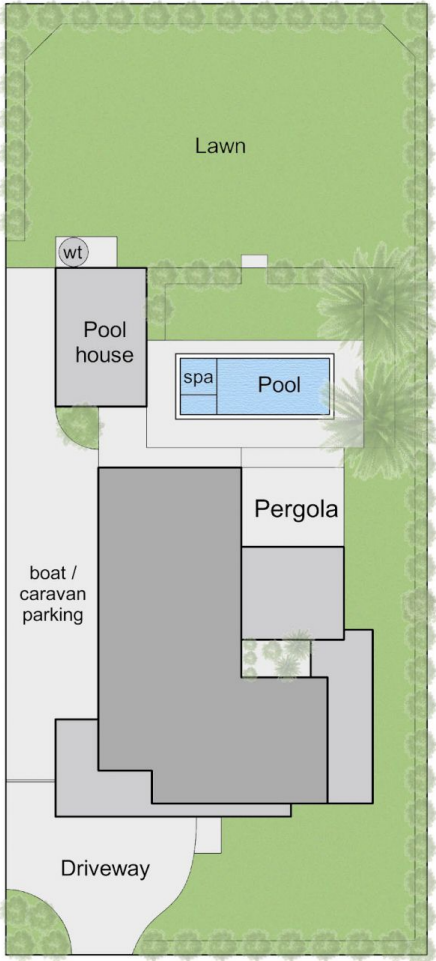


**Lisa Bendle**  
0359754555



Living Area - 58.0 squares (approx)  
 Garage - 7.4 squares (approx)  
 Pool House - 4.7 squares (approx)  
**Total - 70.1 squares (approx)**

Upper Floor



Site Plan

Lower Floor

28 Lindenderry Circuit, Mornington

This floorplan is for illustration purposes only and no warranty is given to its accuracy. Purchasers are advised to carry out their own investigations. Produced by **realitywriters (03) 5970 2222**