



3 Pennington Close MOUNT ELIZA VIC

4 🏠 2 🚗 2 🚗

Defined by decadent entertaining parameters and poolside prestige, this resort-style home plays host to unforgettable living across approximately 2,719sqm of landscaped gardens, highlighting an elevated appeal with in-ground swimming pool, private 'pitch and putt' 3-hole golf green, creek frontage and vast entertaining parameters.

Price : \$1,700,000 - \$1,880,000
Land Size : 2719 sqm
View : <https://www.mcewingpartners.com/sale/vic/bayside/mount-eliza/residential/house/7912516>

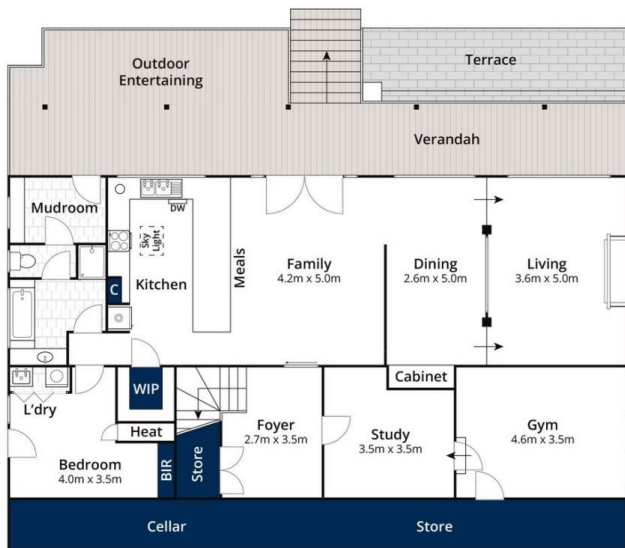
Presenting a sanctuary-like environment with privacy from the street, on the fringe of the Mornington Peninsula with all that it has to offer, from the beaches, wineries, golf courses, fishing, surfing & local places to explore. The set-back interiors welcome large-scale hosting abilities with both formal and informal living zones, and an open-plan kitchen perfect for at-home culinary enthusiasts. Opening outwards across a covered verandah and poolside cabana, private outdoor enjoyment spills beyond manicured hedging and rose gardens to a children's play space,



Quentin McEwing
0397872422



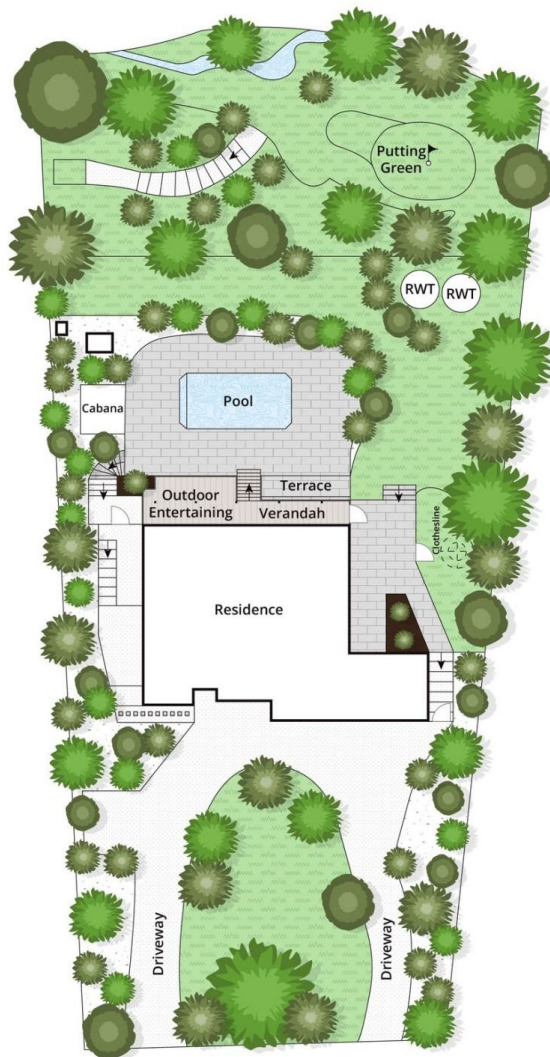
Kelsi Culhane
0397872422



Lower Floor



Entry Level



Site Plan

Approx House Area 346m²
Approx Land Area 2719m²

Whilst bwr.com.au has made every attempt to ensure the accuracy of the floor plan contained here, measurements are approximate and no responsibility is taken for any error, omission, or mis-statement. This plan is for illustrative purposes only.

3 Pennington Close, Mount Eliza