



4/1 Baden Powell Place MOUNT ELIZA VIC

2 1 2

Delivering faultless style and timeless luxury in one of Mount Eliza's most exclusive avenues, this private yet light-filled 2-bedroom residence introduces a lifestyle of sheer accessibility and retreat with a position only paces from the Village.

Inspired by earlier architectural movements, a timeless facade with two-toned brickwork and fretwork sits enriched with vibrant front gardens before soaring 9ft ceilings and ceiling roses continue an elegant sense across spacious interiors. Richly evocative rooms offer large refined entertaining space across a formal lounge and dining, casual meals and light-capturing deck with garden surrounds.

The warm and inviting ambience extends across the two-bedroom accommodation zone, where a spacious

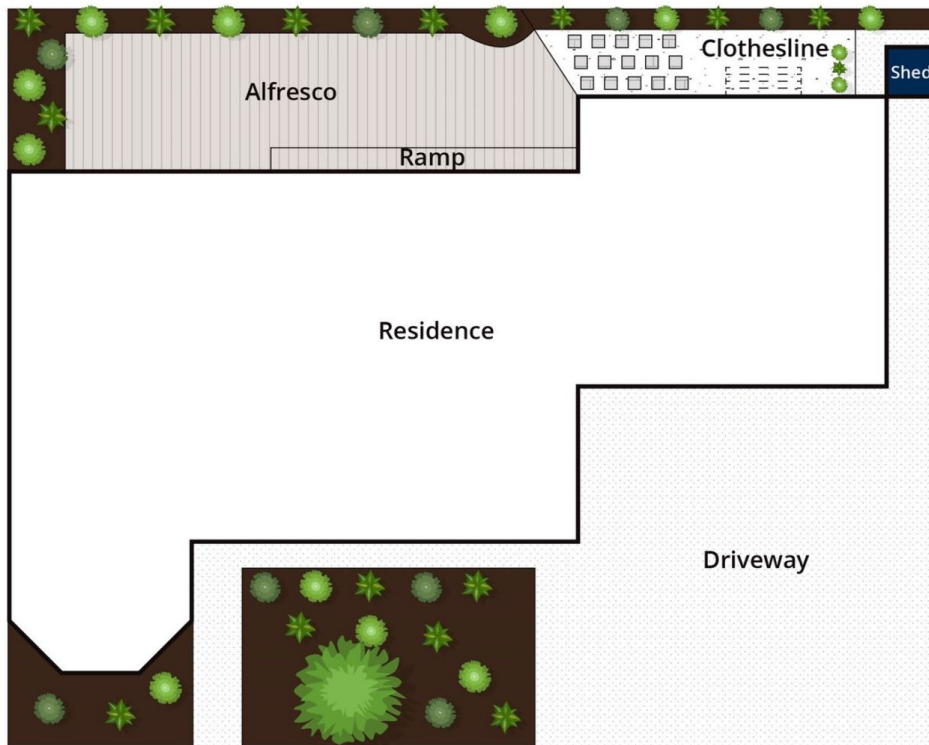
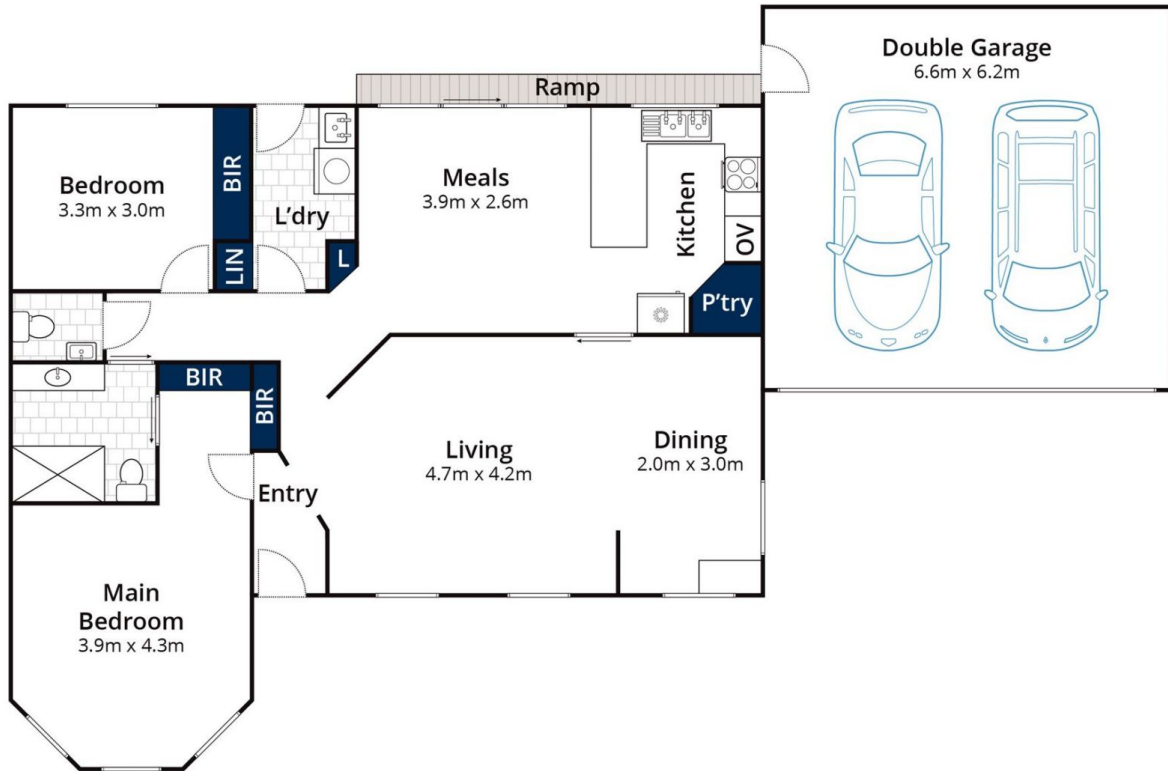
Price : \$ 830,000
Land Size : 349 sqm
View : <https://www.mcewingpartners.com/sale/vic/bayside/mount-eliza/residential/unit/7902469>



Lisa Bendle
0359754555



Dean Phillips
0359754555



Approx House Area 150m²

Approx Land Area 349m²

Whilst bwr.com.au has made every attempt to ensure the accuracy of the floor plan contained here, measurements are approximate and no responsibility is taken for any error, omission, or mis-statement. This plan is for illustrative purposes only.

4/1 Baden Powell Place, Mount Eliza