



90 Summerfield Drive MORNINGTON VIC

5 3 2

Reminiscent of a luxurious Provençal villa complete with terraced gardens, this exquisite residence captivates with its suite of living spaces, French-inspired elegance and premium bespoke finishes. Opening to a grand entry hall backdropped by a sweeping two-way staircase, opulence unfurls across two levels revealing a home theatre, sundrenched family room and plush retreat beside the upper sleeping quarters. A chef's kitchen impresses with a central island with liqueur display and bar fridge, a pyrolytic oven and an integrated dishwasher in the deluxe butler's pantry. Glass doors open to a deluxe entertainer's deck with a high pergola with skylights, which gazes out across the glorious gardens with travertine steps to a balmy heated swimming pool bordered by towering hedges. Beautifully elevated behind a horseshoe driveway, this

Type : House
Land Size : 1155 sqm
View : <https://www.mcewingpartners.com/sale/vic/mornington-peninsula/mornington/residential/house/7895393>

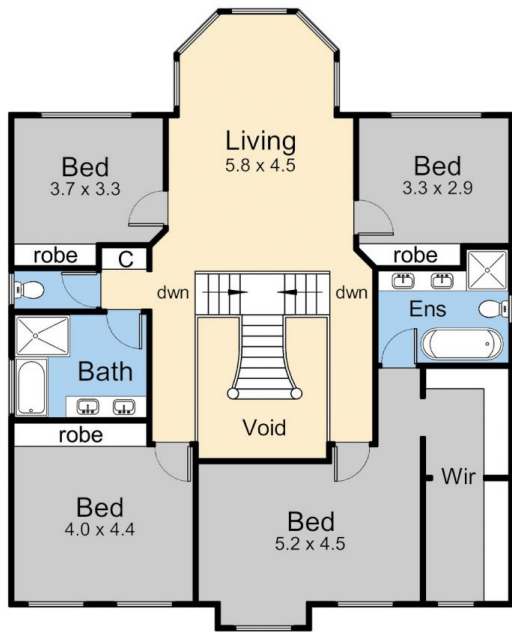


Lisa Bendle
0359754555

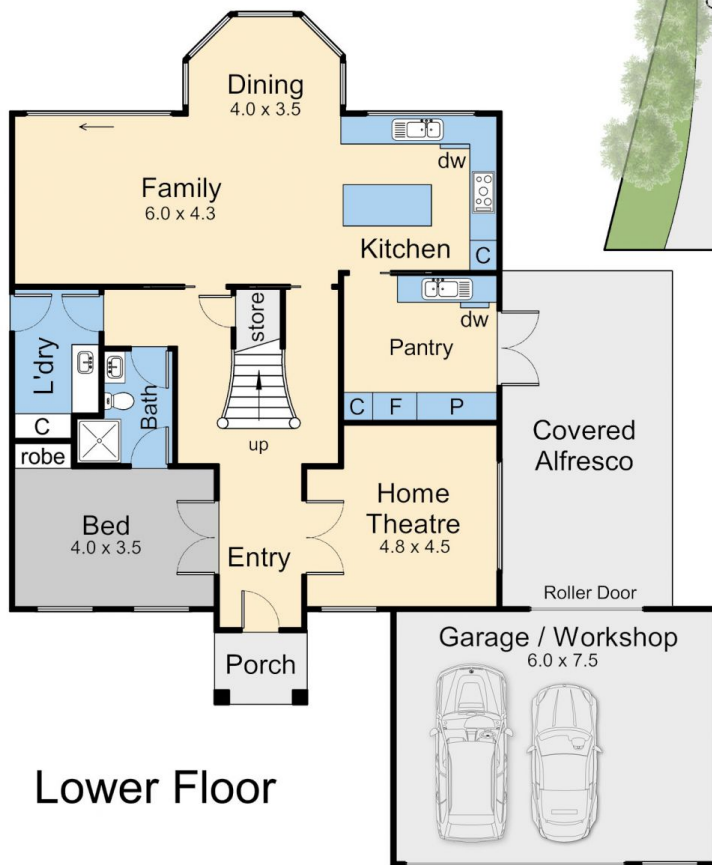


Dean Phillips
0359754555

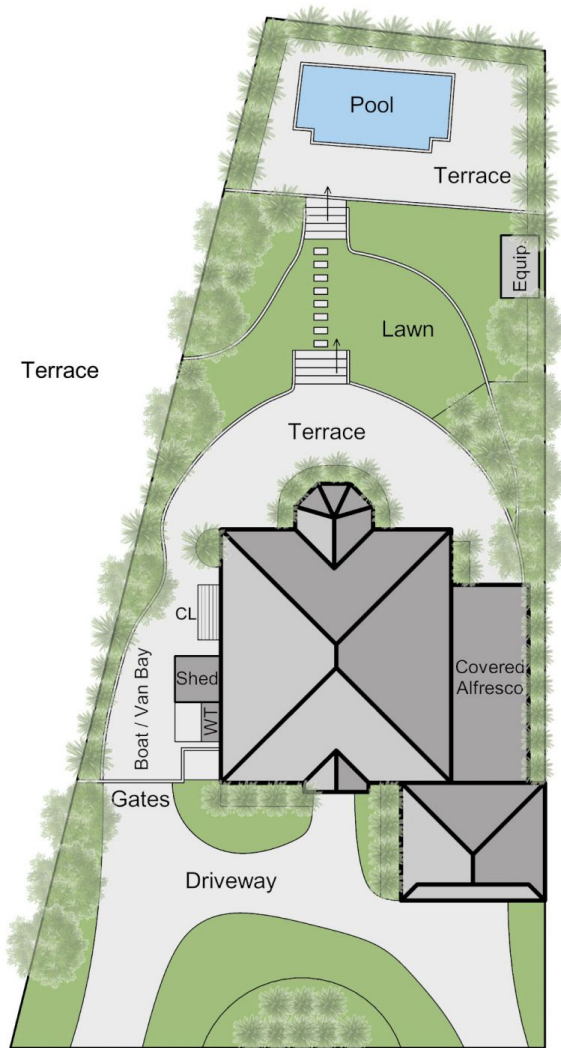
[For full version visit the website](#)



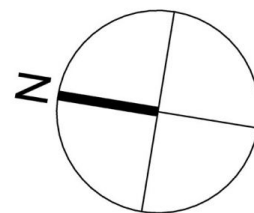
Upper Floor



Lower Floor



Site Plan



Internal area = 32 squares (approx)
 Garage area = 5 squares (approx)
 Alfresco area = 4 squares (approx)
 Total area = 41 squares (approx)

90 Summerfield Drive, Mornington

This floorplan is for illustration purposes only and no warranty is given to its accuracy. Purchasers are advised to carry out their own investigations. Produced by **realitywriters** (03) 5970 2222