



12 Carnoustie Grove MORNINGTON VIC

4 2 2

A masterclass in contemporary refinement and versatile design, this new and exclusive dual-level residence epitomises unparalleled leisure and lifestyle within one of Mornington's most treasured beachside locals. Flaunting their trademark excellence, building group L. Clarke & Sons bring to life this architectural statement with a layout that delivers low-maintenance living without the compromise.

Using negative space and expansive glazing to impressive effect, the four-bedroom 2-living zone home stretches engineered timber floors to a rear entertaining domain where a free-flow of space brings together an alfresco deck with generous living and dining dimensions. Thoughtful considerations continue to the kitchen where a butler's pantry, stone waterfall benchtops and Smeg appliances amplify a luxurious culinary experience.

Price : \$1,850,000 - \$1,975,000

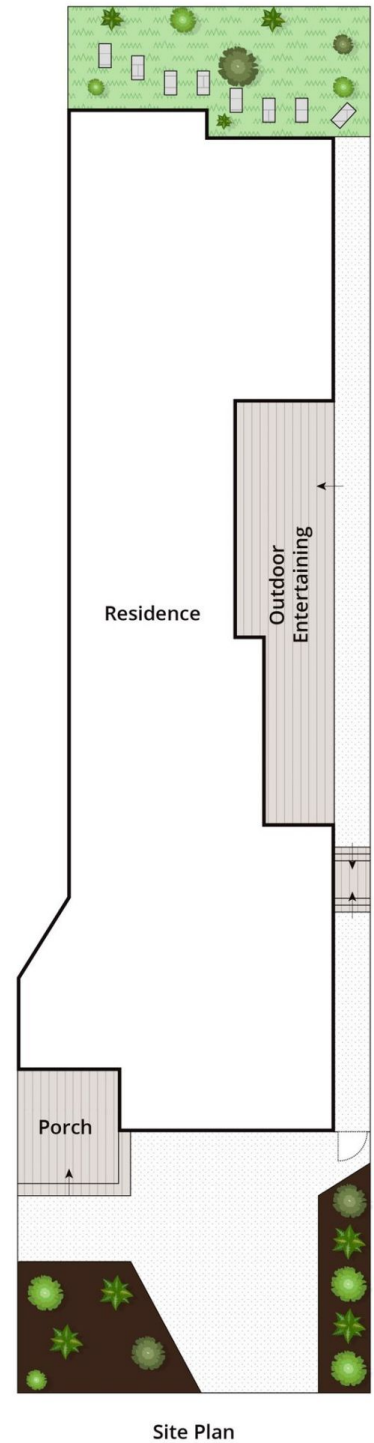
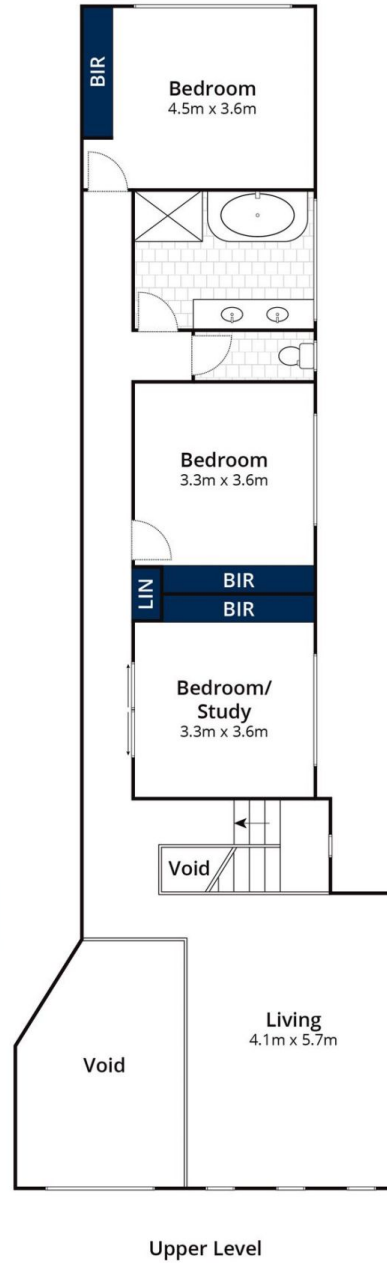
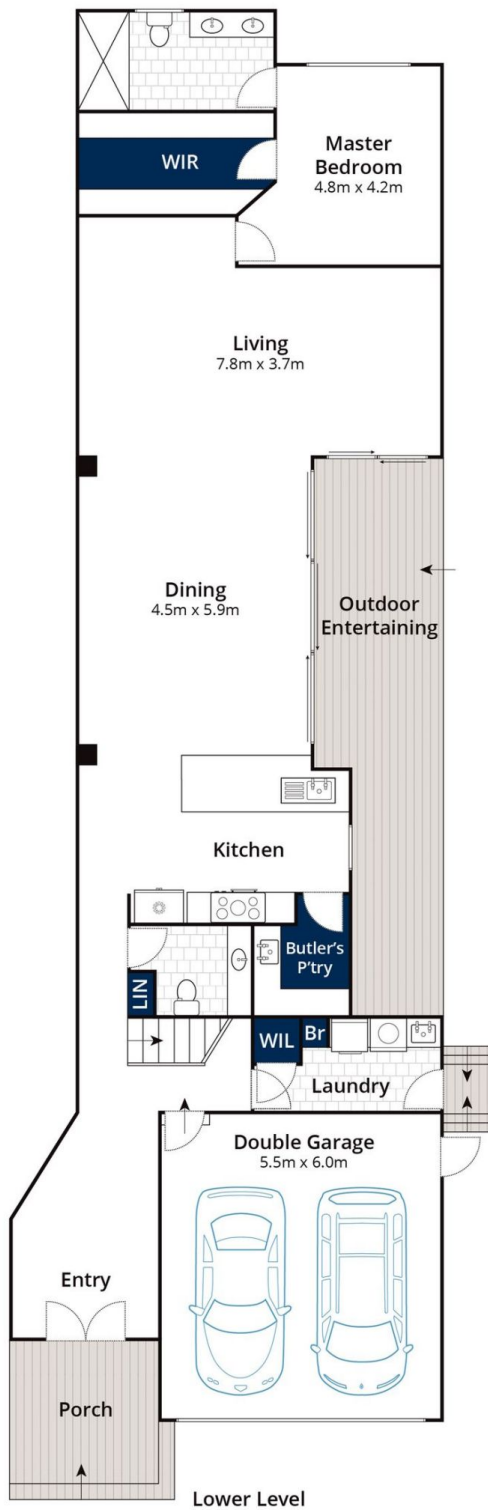
View : <https://www.mcewingpartners.com/sale/vic/mornington-peninsula/mornington/residential/house/7844570>



Alexandra Otte
0359754555



Indi Fisher
0359754555



Approx House Area 294m²
Approx Land Area 362m²

Whilst bwrm.com.au has made every attempt to ensure the accuracy of the floor plan contained here, measurements are approximate and no responsibility is taken for any error, omission, or mis-statement. This plan is for illustrative purposes only.

12 Carnoustie Grove, Mornington