



8 Rainbow Place MORNINGTON VIC

3  2  2 

A delightful meander to cafes, restaurants, boutiques and the beach, this sleek contemporary townhouse showcases a covetable lifestyle package for sunseekers and beachcombers in the beating heart of seaside Mornington. High ceilings, fresh tones, spotless charcoal carpeting and timber-look tiling bestow a casual coastal elegance, while an array of sliding glass doors throughout open principal rooms to a selection of terraces and invite in balmy cross-breezes. At the apex, the three bedrooms share a master ensuite and a full family bathroom in this well considered layout, which also boasts a study nook and an oversized remote tandem garage opening to a bonus room waiting to be transformed into a studio, office, gym, workshop or even a teenage retreat. Ideal for both seachangers and holidaymakers, the residence epitomises carefree comfort, whether relaxing in the plush living room with a quiet cuppa, cooking up a feast in the contemporary

Price : \$ 710,000

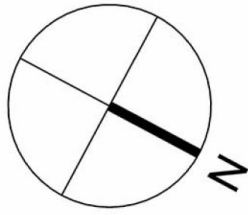
View : <https://www.mcewingpartners.com/sale/vic/mornington-peninsula/mornington/residential/house/7777874>



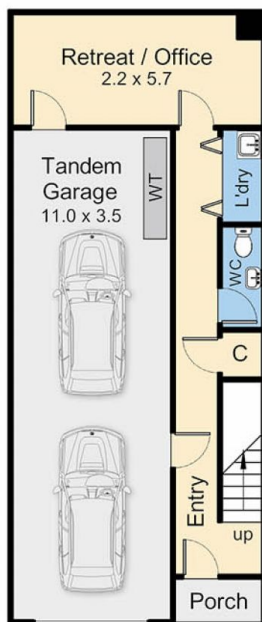
Marcus Gollings
59754555



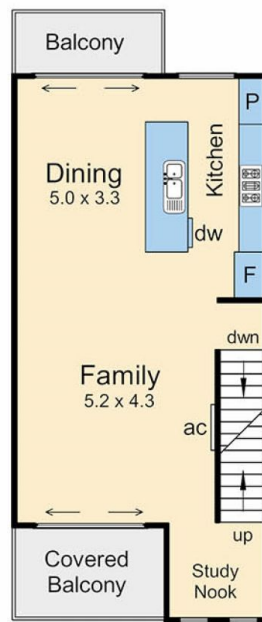
Indi Fisher
0428182700



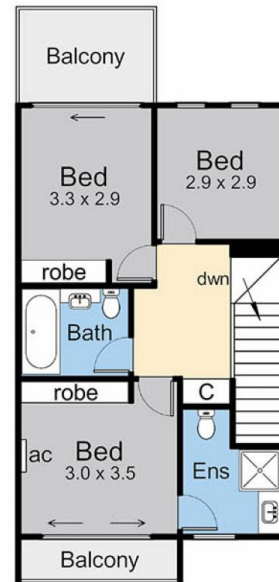
Internal area = 15.4 squares (approx)
 External area = 2.2 squares (approx)
 Garage area = 4.3 squares (approx)
 Total area = 21.9 squares (approx)



Ground Floor



First Floor



Upper Floor

8 Rainbow Place, Mornington

This floorplan is for illustration purposes only and no warranty is given to its accuracy. Purchasers are advised to carry out their own investigations. Produced by **realitywriters** (03) 5970 2222