



6 Birdwood Avenue MORNINGTON VIC

4 2 2

Serenaded by the lapping of the waves rolling onto the nearby shore, this 1920s California bungalow has been exquisitely updated and extended in seamless harmony with the original character to deliver a captivating seaside oasis just 350 metres to Mills Beach. Cradled within a quiet coastal court amid serene native gardens, the home resonates with the authentic charm of yesteryear with lofty ceilings, hardwood flooring, sash windows and an open fireplace complemented by a suite of contemporary upgrades. The flexible split-level floorplan boasts up to three living areas and a modern kitchen in the heart with quality appliances, while an array of glass doors open to a central alfresco deck with built-in bench seating. The wide covered verandah on the sunset side invites cocktails with friends before strolling to Main Street for dinner.

[For full version visit the website](#)

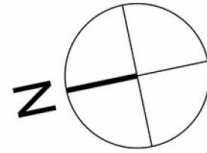
Type : House
Price : \$ 2,260,000
Land Size : 877 sqm
View : <https://www.mcewingpartners.com/sale/vic/mornington-peninsula/mornington/residential/house/7719151>



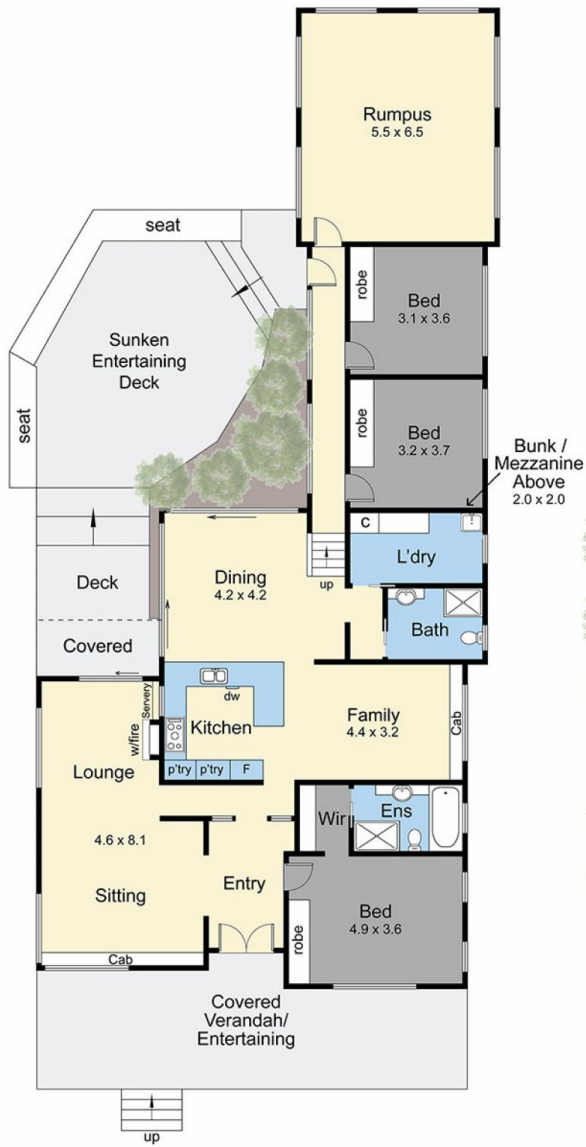
Marcus Gollings
0359754555



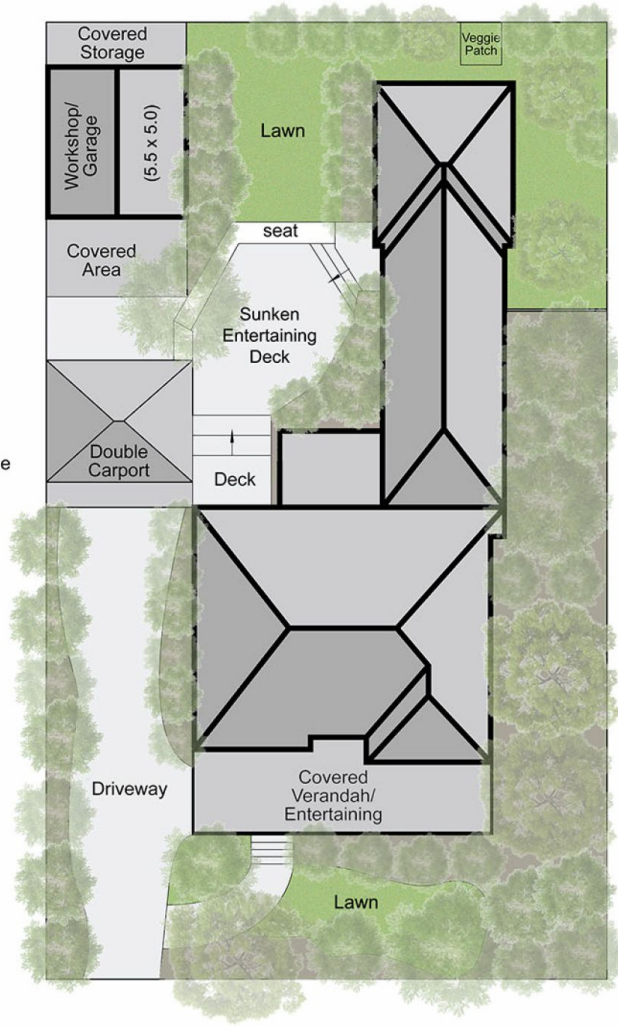
Lisa Bendle
0359754555



Internal Living Area
21.5 squares



Floor Plan



Site Plan

6 Birdwood Ave, Mornington

This Floorplan is for illustration purposes only and no warranty is given to its accuracy. Purchasers are advised to carry out their own investigations. Produced by realtywriters (03) 5970 2222