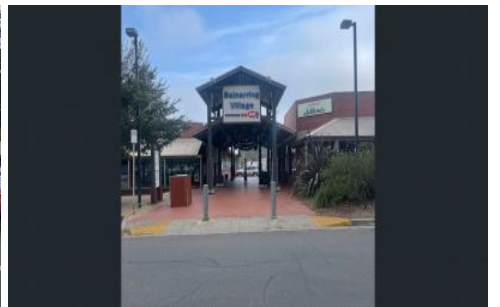
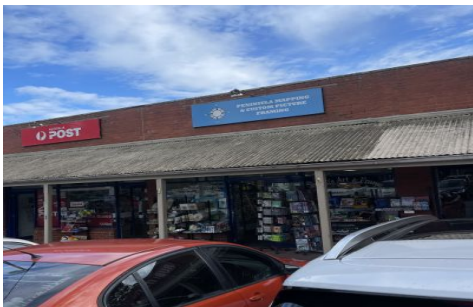


McEWING & PARTNERS



2/3050 Frankston Flinders Road BALNARRING VIC

Balnarring Village

Approx 109.80m²

\$43,600 pa (approx \$400 per sqm) + GST + OUTGOINGS

Spacious shop in prime position .

* Ample parking

* Shopping Centre Great Exposure.

* Approximately 109 m²

* Join well known local businesses. There is abundant on site parking with excellent generous front exposure

Suitable for a variety of retail uses with exclusivity provisions for your business type.

Suit many types of retail and services.

Landlord willing to negotiate start up incentives with new

Tenant prepared to make a reasonable lease commitment.

Building Size : 109.8 sqm

View

: <https://www.mcewingpartners.com/lease/vic/mornington-peninsula/balnarring/commercial/retail/7713987>



Samantha Stephenson
0397872422