



1 Bellevue Crescent MOUNT ELIZA VIC

4  4  2 

Tapered into the elevation of the cascading 1/4-acre (approx) allotment to capture sweeping views across the coastal panorama to the bay, this multi-living-zone home is defined by soaring architectural lines and warm inviting spaces embellished with a suite of contemporary upgrades.

Crafted across dual levels with a family-focused floorplan and entertainer's agenda, the residence spoils householders with three living areas on the lower level, while the enormous rumpus room with vaulted ceiling, polished timber floors and built-in wet bar provides a entertainers paradise for celebratory soirees, spilling out to the alfresco deck with views to Arthurs Seat.

The exceptional quality and lifestyle appeal continue in the

[For full version visit the website](https://www.mcewingpartners.com/sale/vic/bayside/mount-eliza/residential/house/7713647)

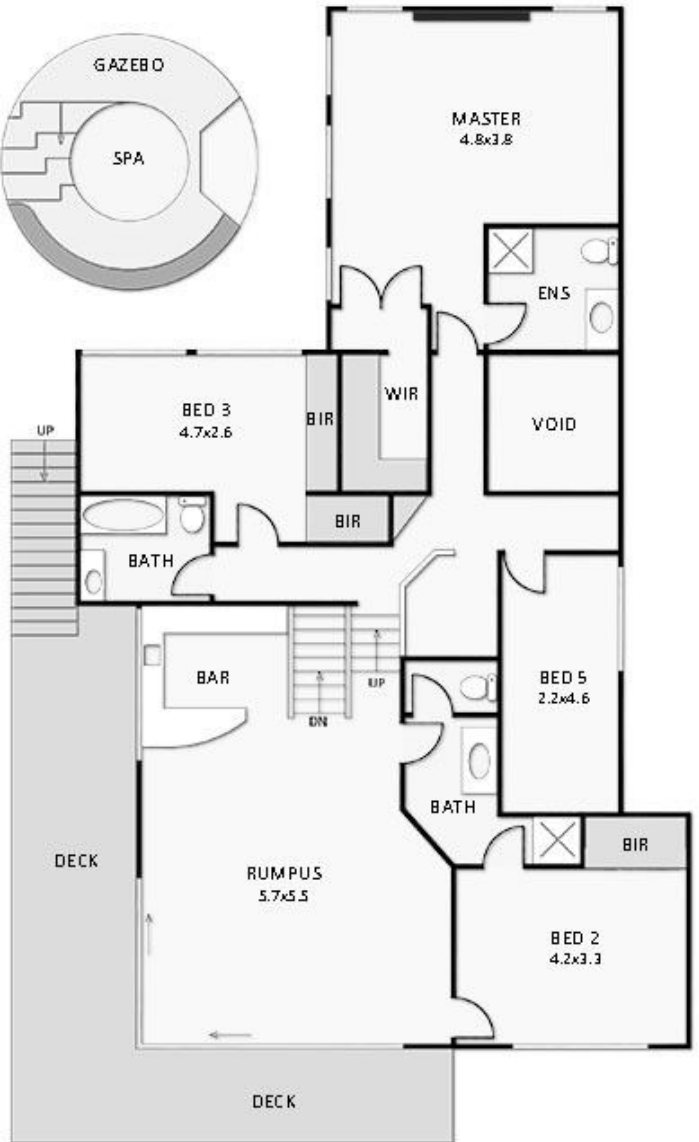
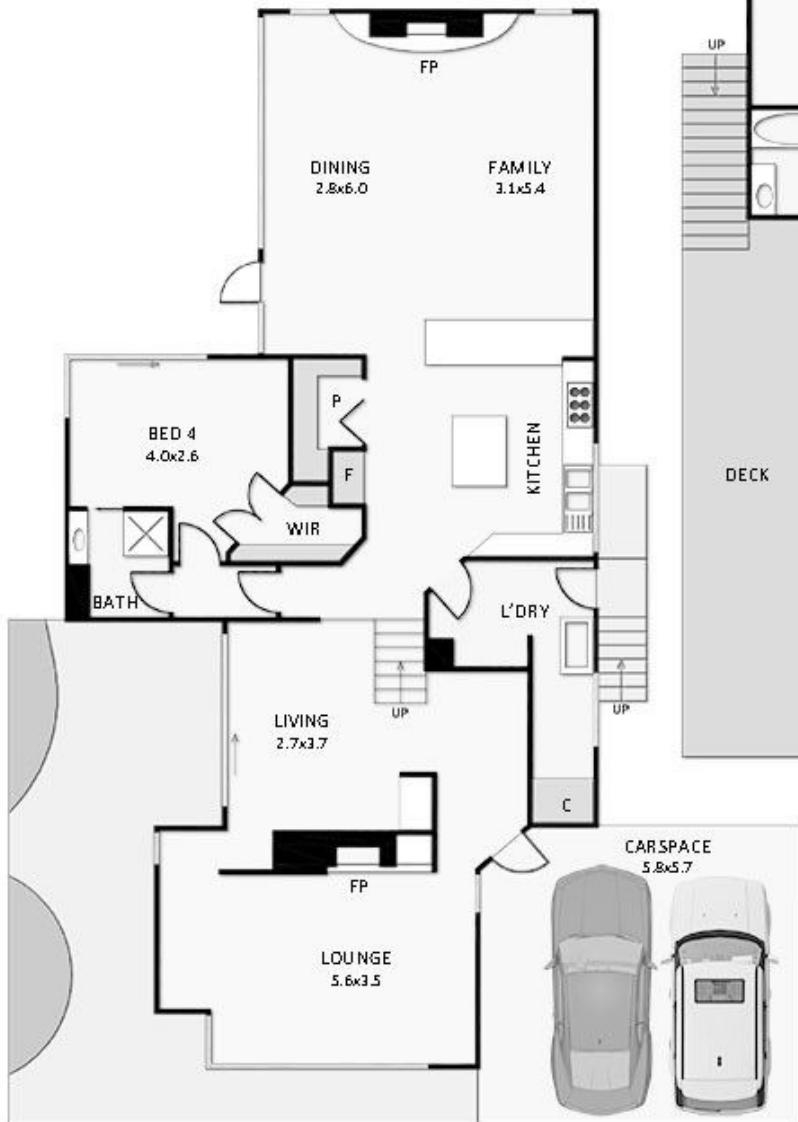
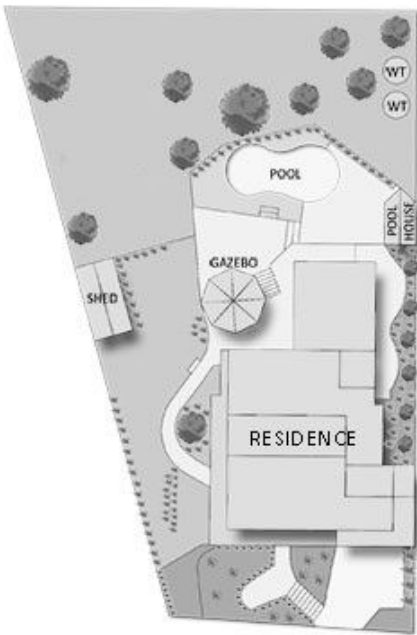
Type : House
Land Size : 1077 sqm
View : <https://www.mcewingpartners.com/sale/vic/bayside/mount-eliza/residential/house/7713647>



Quentin McEwing
0397872422



Kelsi Culhane
0397872422



Land Size: 1077m²

Whilst every attempt has been made to ensure the accuracy of the floor plan contained here, measurements of doors, windows, rooms and any other item are approximate and no responsibility is taken for any error, omission, or misstatement. This plan is for illustrative purposes only and should only be used as such by any prospective purchaser.