



32 Rosserdale Crescent MOUNT ELIZA VIC

3 2 2

This is it! The perfect home and ideal solution for that astute buyer looking to downsize while avoiding the typical townhouse or unit alternative. This single-level hideaway welcomes a charming coastal lifestyle only footsteps from Ranelagh Beach. Occupying a prestigious position within the exclusive Ranelagh Estate, an unassuming street frontage guards an established 867sqm (approx.) of living embellished with premium finishes and swathes of natural light. Thoughtfully crafted to fulfil the desires and aspirations of both families and downsizers, the home consciously zones accommodation using a series of light-filled entertaining spaces designed to bring the family together. Culinary passions are explored across a well-appointed kitchen where Neff appliances sit within sleek cabinetry and stone benchtops, while a clever orientation towards the sunroom ensures conversations flow across the zones.

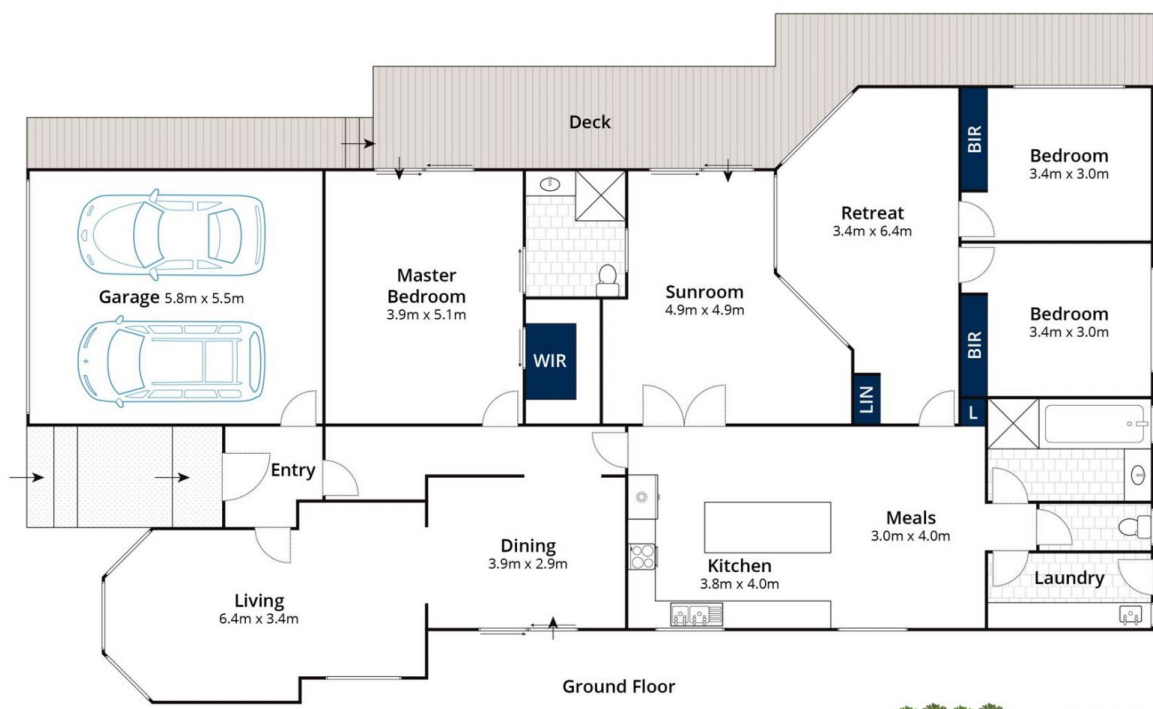
Price : \$1,650,000 - \$1,815,000
Land Size : 867 sqm
View : <https://www.mcewingpartners.com/sale/vic/bayside/mount-eliza/residential/house/7657907>



Quentin McEwing
0397872422



Kelsi Culhane
0397872422



Ground Floor



Site Plan



(Not In Position)

Approx House Area 170m²
Approx Land Area 775m²

Whilst bwr.com.au has made every attempt to ensure the accuracy of the floor plan contained here, measurements are approximate and no responsibility is taken for any error, omission, or mis-statement. This plan is for illustrative purposes only.

32 Rosserdale Crescent, Mount Eliza