



17/14 Tanti Avenue MORNINGTON VIC

3 2 2

Luxuriate in coastal opulence with this sophisticated tri-level residence in the exclusive Sutton Grange (circa 1870) historic apartment complex just steps to beaches, the yacht club and vibrant Main Street. Captivating bay views and an unrivalled indulgence in timeless design make this abode the quintessence of refinement, spaciousness and superior living. With an internal 8-person lift gliding from the basement garage to all floors, timeless grace unfurls throughout with three elegant living rooms, two dining zones and a choice of alfresco areas to absorb the coastal ambience. The gourmet kitchen is a cook's dream with waterfall stone countertops and all-Miele appliances, while a hideaway kitchenette on the ground level is the perfect complement to entertaining on the garden courtyard. Beyond the home theatre at the mezzanine level, the main living area on the third level flows out through a bank of bifold glass doors to a tranquil

Price : \$ 2,150,000

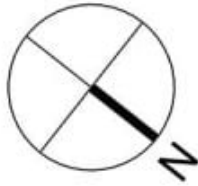
View : <https://www.mcewingpartners.com/sale/vic/mornington-peninsula/mornington/residential/house/7512823>



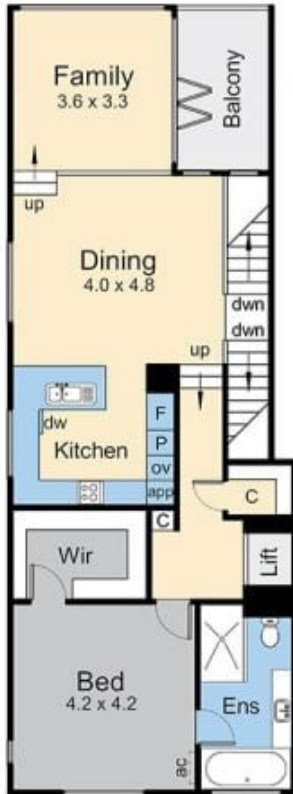
Dean Phillips
0359754555



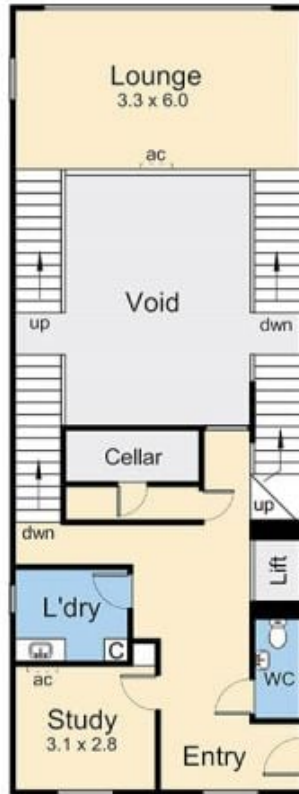
Alexandra Otte
0359754555



Internal living area = 30.2 squares (approx)
 External living areas = 4.5 squares (approx)
 Garage area = 4.2 squares (approx)



Second Floor



First Floor



Basement Floor



Ground Floor

17/14 Tanti Avenue, Mornington

This floorplan is for illustration purposes only and no warranty is given to its accuracy. Purchasers are advised to carry out their own investigations. Produced by **realitywriters** (03) 5970 2222