



2 Roehampton Crescent MOUNT ELIZA VIC

4  3  2 

An historic home of unbridled elegance with a premium beachside address, this breathtaking three-bedroom home with study and studio / 4th bedroom weaves chic modern updates effortlessly into the timeless sophistication of the original residence. Constructed in 1935 as a summer house for the grandson of former prime minister Alfred Deakin, the superbly functional floorplan is as relevant today as it was in the mid-30s boasting spacious formal and informal living and dining areas wrapped around a large central outdoor entertaining area. Taking in the panoramic views across Port Phillip Bay, a second alfresco area upstairs provides a heavenly locale for a pre-dinner cocktail, as the lamb roasts to perfection in the glamorously updated Miele kitchen with dual ovens, dishwasher and stone countertops. Three modern bathrooms comfortably cater to household needs over two levels, while the studio / 4th bedroom is within paces of the lower bathroom. Fitted

Price : \$2,750,000 - \$2,950,000
Land Size : 841 sqm
View : <https://www.mcewingpartners.com/sale/vic/bayside/mount-eliza/residential/house/7507450>



Quentin McEwing
0397872422



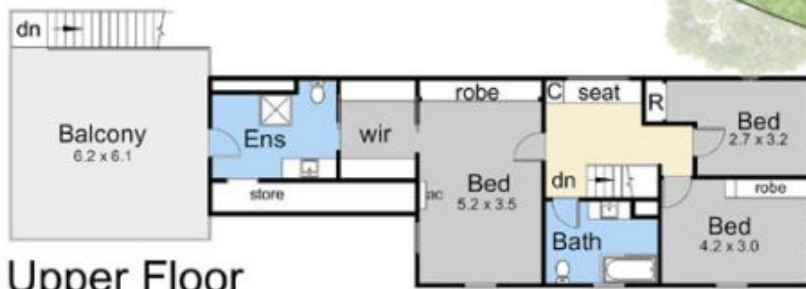
Kelsi Culhane
0397872422



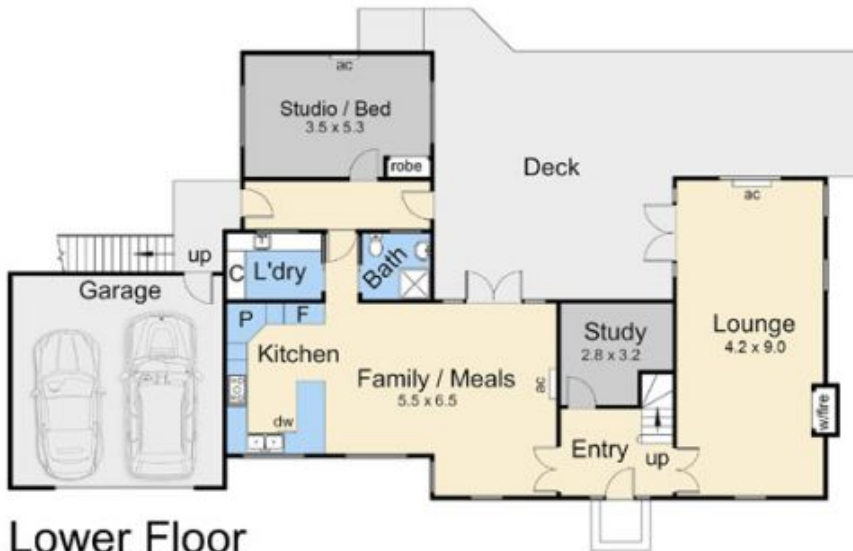
Internal Living Area
25.4 squares



Site Plan



Upper Floor



Lower Floor

2 Roehampton Cres, Mount Eliza

This floorplan is for illustration purposes only and no warranty is given to its accuracy. Purchasers are advised to carry out their own investigations. Produced by **realitywriters** (03) 5970 2222