



37 Wimborne Avenue MOUNT ELIZA VIC

3 3 2

Located in the heart of Mt Eliza, just a stone's throw away from the Village and local schools, this stunning property is a haven for those who appreciate style and comfort. With 3 bedrooms plus a spacious study nook its spacious layout to its beautiful features, every aspect of this home is designed to enhance your lifestyle.

A master bedroom that boasts a built-in robe and ensuite, providing a private retreat for relaxation. Two additional bedrooms, each with their own bathroom and built-in robes, ensure ample space for the whole family. Whether you're hosting guests or enjoying quality time with loved ones, the formal spacious lounge is the perfect setting for all your entertaining needs.

Need some downtime? Head upstairs to the rumpus room/second living zone, complete with a balcony

Land Size : 859 sqm
View : <https://www.mcewingpartners.com/lease/vic/bayside/mount-eliza/residential/house/7470873>



Samantha Stephenson
0397872422

37 Wimborne Avenue, Mount Eliza

3 Bed 3 Bath 2 Car



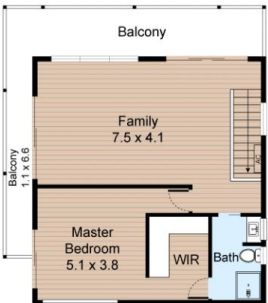
LEGEND

- 1. Driveway
- 2. Porch
- 3. Alfresco
- 4. Carport
- 5. Pool
- 6. Clothes Line
- 7. Shed

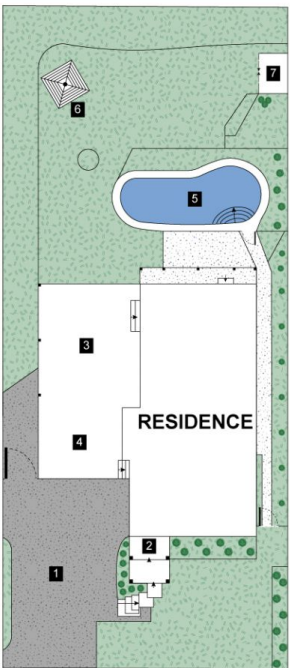
Internal : 173m²
External : 85m²



GROUND FLOOR



FIRST FLOOR



SITE PLAN