



## 7 Linnet Court MORNINGTON VIC

3 1 2

Offering the allure of Mornington's every amenity only footsteps from home, this well-presented residence balances a combination of contemporary updates and original details to offer a fantastic foundation for first-time property ownership or investment.

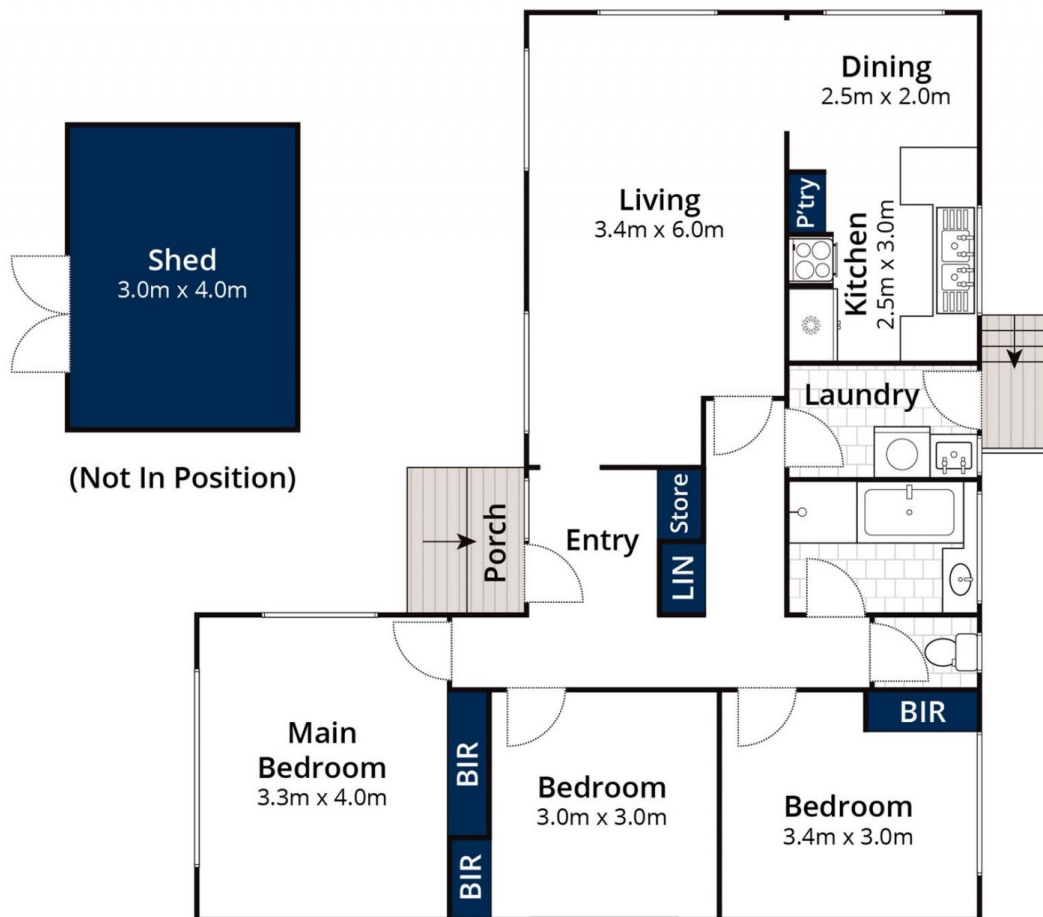
Concealed within a signature 80's silhouette, the three-bedroom, one bathroom layout highlights light-filled entertaining across recently polished hardwood timber floors, as open lounge and dining dimensions present with study nook. Embraced with practical character, the kitchen presents with a breakfast bar, Westinghouse freestanding oven and rear garden views, where charming low-maintenance gardens offer further scope to those with a green thumb.

Beautifully positioned to capture blissful Eucalypt outlooks,

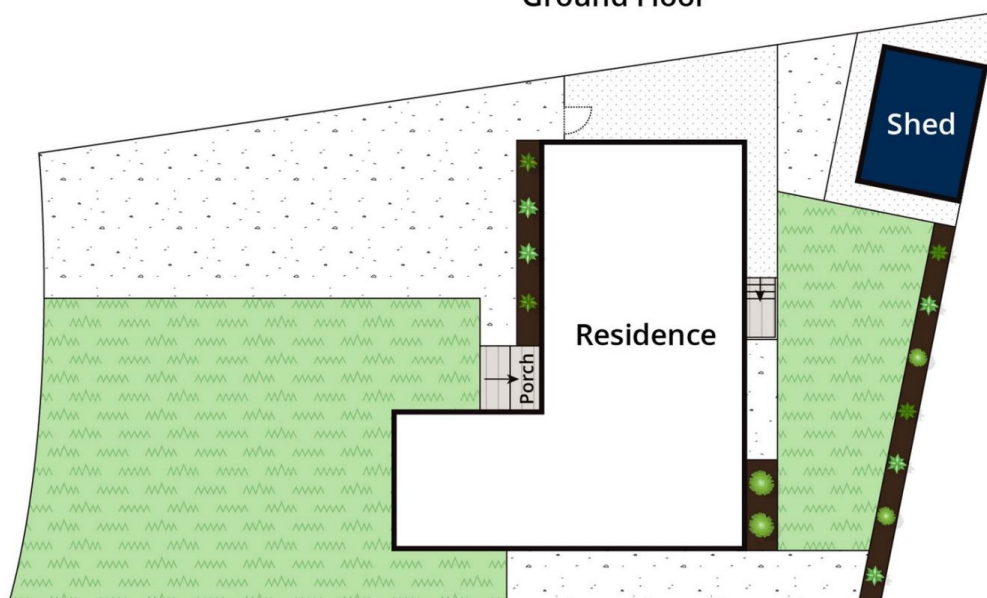
**Price** : \$ 720,000  
**Land Size** : 534 sqm  
**View** : <https://www.mcewingpartners.com/sale/vic/mornington-peninsula/mornington/residential/house/7466126>



**Lisa Bendle**  
0359754555



Ground Floor



Site Plan

Approx House Area 91m<sup>2</sup>  
Approx Land Area 534m<sup>2</sup>

Whilst [bwr.com.au](http://bwr.com.au) has made every attempt to ensure the accuracy of the floor plan contained here, measurements are approximate and no responsibility is taken for any error, omission, or mis-statement. This plan is for illustrative purposes only.

## 7 Linnet Court, Mornington