



3/769 Esplanade MORNINGTON VIC

2 1 1

Seaside living has never been easier here on the famous Mornington Esplanade at this two-bedroom ground-floor apartment. Located opposite Port Phillip Bay a mere 150 metres (approx.) from Royal Beach this home sits within easy walking distance to the bowling club, Main Street shopping, Mornington Park, The Royal Hotel, Mornington Central and so much more.

View : <https://www.mcewingpartners.com/lease/vic/mornington-peninsula/mornington/residential/apartment/7446613>

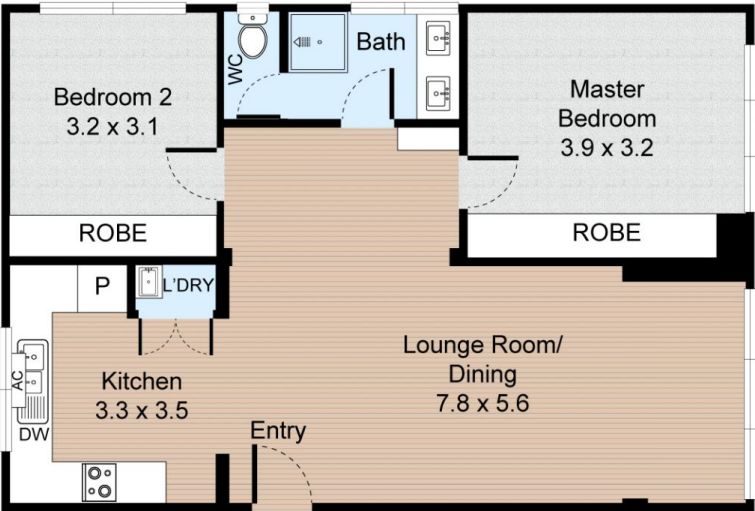


Melissa Sarmiento
0397872422

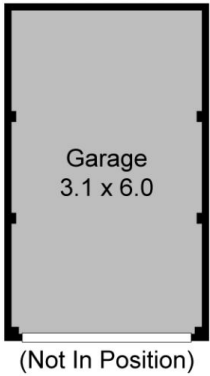
- Freshly painted
- Open-plan living and dining
- Built-in robes to both bedrooms
- Twin-vanity central bathroom
- Gourmet kitchen with u/bench oven, electric cook-top,

Unit 3, 769 Esplanade, Mornington

2 Bed 1 Bath 1 Car



FLOOR PLAN



Garage
3.1 x 6.0

Internal : 86m²
External : 19m²

GARAGE

McEWING & PARTNERS



All information contained herein is gathered from our 3D scanned tours via Matterport. Whilst the 3D scanning technology is very accurate we cannot guarantee its accuracy and interested parties should rely on their own enquiries.