



64A Volitans Avenue MOUNT ELIZA VIC

5 4 2

Discretely set at the end of a gated sealed drive is this magnificent modern large scale 5 bedroom family residence complete with multiple fluid living zones over two levels and inside & out.

Step inside under the porch entry to realise a foyer space ahead of the generous interiors anchored by rich timber flooring and soaring ceilings throughout to great effect. On your right discover a sizeable TV / lounge area and opposite a living room with bright aspects to the front of the home.

The main domain is equally impressive and dedicated to an enormous dynamic space incorporating a stunning stone-topped gourmet kitchen & meals, family & dining under cathedral-like 12ft. ceilings framed by oversized windows and sliders to harness the westerly bright

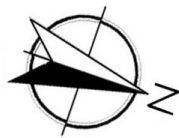
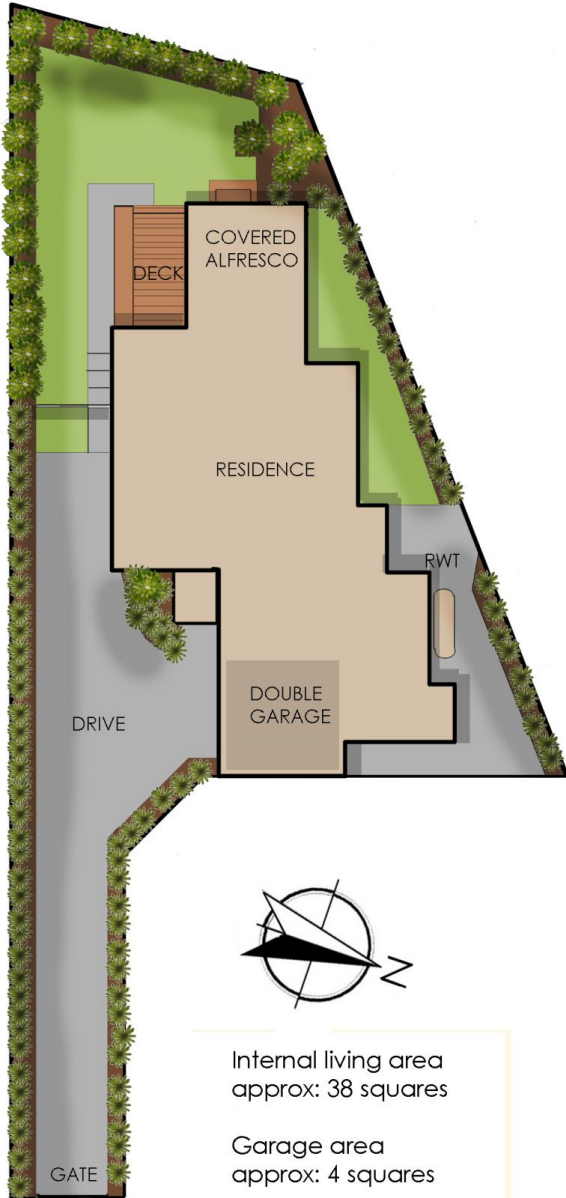
Land Size : 772 sqm
View : <https://www.mcewingpartners.com/sale/vic/bayside/mount-eliza/residential/house/7438809>



Dean Phillips
0359754555



Lisa Bendle
0359754555

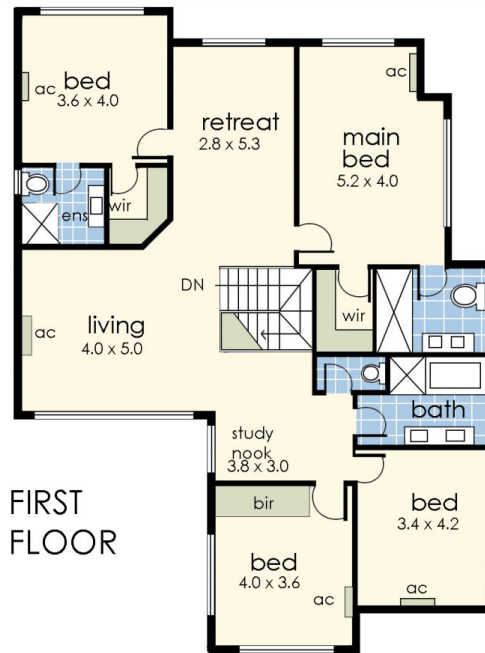


Internal living area
approx: 38 squares

Garage area
approx: 4 squares

Deck, alfresco and
porch area
approx: 6 squares

Total area
approx: 48 squares



64A Volitans Avenue, Mount Eliza

© Produced by DND Floorplans

This floorplan is a guide only and no warranty is given to its accuracy in dimensions. Purchasers are advised to carry out their own investigations