



## 11/14 Tanti Avenue MORNINGTON VIC

3 2 2

Experience all the benefits of luxury beachside living from this sophisticated tri-level residence in the historically significant Sutton Grange Estate c1877, with mesmerising bay views from two levels and an eye for indulgence. First class in design, luxurious in finish and superb in style, this stunning 3-bedroom, 2.5-bathroom tri-level residence oozes class, space and lifestyle excellence.

The exhilarating interior will take your breath away from the towering ceilings to the full-height glass and lift access right outside the front door. Exuding contemporary sophistication and designed to maximise natural light, the open-plan family and entertaining domain with kitchenette transitions seamlessly to a stylish alfresco terrace with bay glimpses and lovely landscaping. Further upstairs, the streamlined kitchen is a chef's dream, with smooth stone surfaces and a full complement of Miele appliances, including an

**Price** : \$ 1,850,000

**View** : <https://www.mcewingpartners.com/sale/vic/mornington-peninsula/mornington/residential/house/7401336>

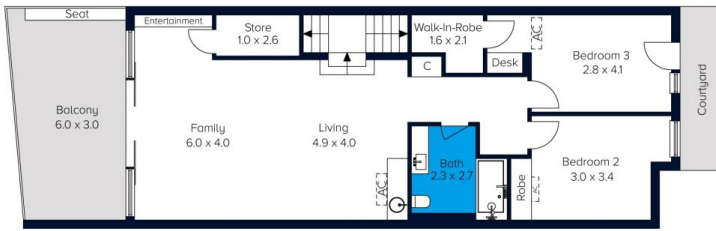


**Dean Phillips**  
0359754555

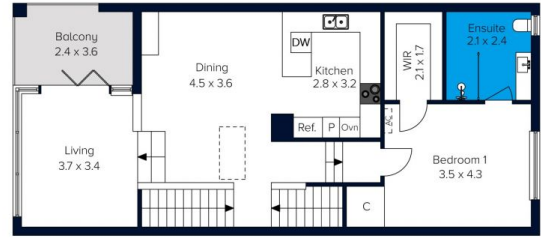


**Alexandra Otte**  
0359754555

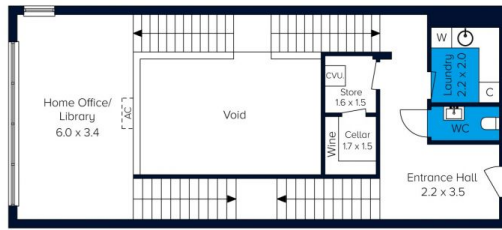
Internal Area : 297 Sqm  
External Area : 33 Sqm  
Total Area : 330 Sqm



Lower Level



Upper Level



Entry Level



Basement  
(Not In Position)