



119 Bay Road MOUNT MARTHA VIC

4 2 2

A breathtaking exemplar of architectural design melded with the landscape to showcase a cascading, multi-living-zone layout, this exquisitely imagined four-bedroom home by architect Barry O'Conner pairs contemporary luxe with Asian-inspired influences to deliver a zen-like oasis of peerless elegance. Between high ceilings and spotted-gum floors, the residence reveals a visual feast of architectural angles flanked by commercial floor-to-ceiling picture windows framing bamboo and cypress in the tranquil gardens, while walls of sliding glass glide open to an array of tiered alfresco decks and a poolside entertaining. A gourmet's kitchen in the heart of the home impresses with a vast stone island with breakfast table, a Miele dishwasher, near-new Fisher & Paykel oven with gas cooktop and a seamless flow into the dining zone and barbecue deck beyond. A unique and inspiring sanctuary, the home is just moments to local kindergartens,

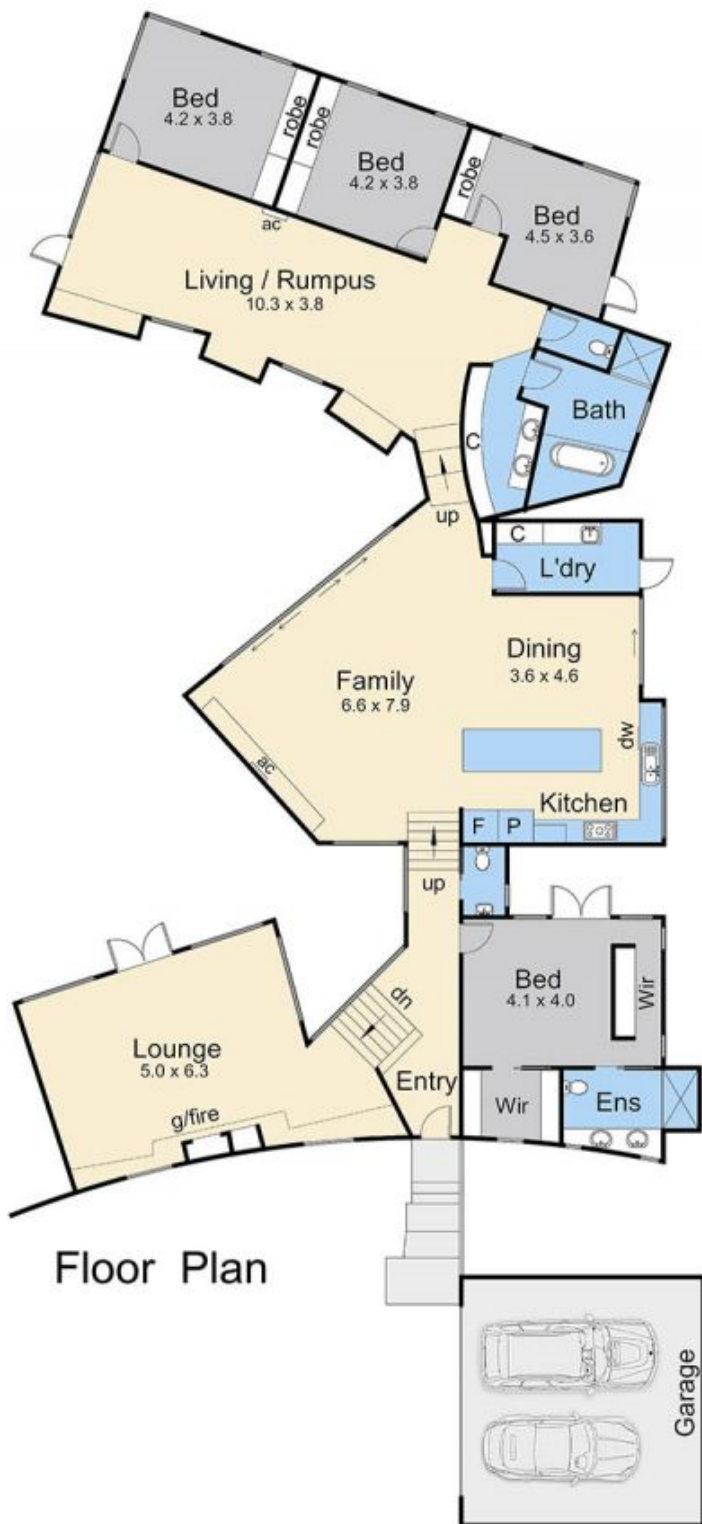
Price : \$ 2,250,000
Land Size : 1150 sqm
View : <https://www.mcewingpartners.com/sale/vic/mornington-peninsula/mount-martha/residential/house/7401223>



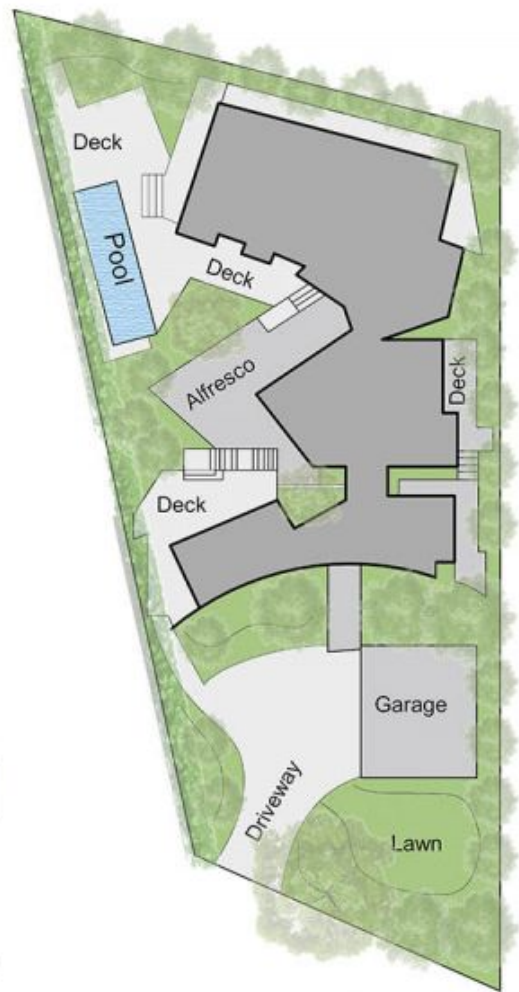
Marcus Gollings
0359754555



Dean Phillips
0359754555



Internal Living Area
 35.7 squares (approx.)



119 Bay Road, Mount Martha

This floorplan is for illustration purposes only and no warranty is given to its accuracy. Purchasers are advised to carry out their own investigations. Produced by **realitywriters** (03) 5970 2222