



28 Mcgown Road MOUNT ELIZA VIC

4  2  2 

APPLICATION APPROVED

Glorious home with polished floors and boasting 4 bedrooms plus study /5th bedroom.

A grand entry leads to formal lounge and dining with feature open fireplace and a fabulous kitchen with double Miele ovens, gas hotplates and built in microwave overlooks a spacious family room with doors leading to private entertaining deck capturing lovely views of Port Phillip Bay.

Downstairs offers a rumpus room opening to a further undercover entertaining patio

The master bedroom boasts its own ensuite and walk in robe whilst the other bedrooms are serviced by a central family bathroom plus a separate powder room.

Further extras include a fenced solar heated inground pool, gas ducted heating, evaporative cooling, and a double remote controlled lock up garage.

View : <https://www.mcewingpartners.com/lease/vic/bayside/mount-eliza/residential/house/7291458>



Samantha Stephenson
97872422

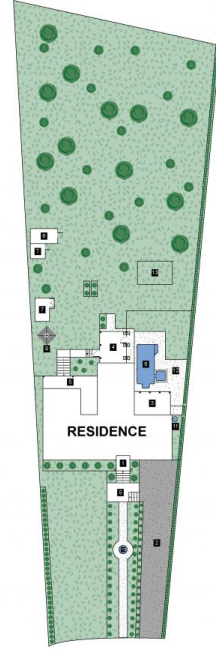
28 Mcgown Road, Mount Eliza

4 Bed 2.5 Bath 2 Car



LOWER GROUND FLOOR

GROUND FLOOR



SITE PLAN

LEGEND

1. Porch
 2. Driveway
 3. Balcony
 4. Alfresco
 5. Deck
 6. Pool
 7. Shed
 8. Cage
 9. Clothes Line
 10. Fountain
 11. Pool Pump
 12. Pool Area
 13. Playground
- Internal : 372m²
External : 52m²