



**2/131-133 Mount Eliza Way MOUNT ELIZA VIC**

**2  1  1 **

Are you looking for a stylish and modern unit in the heart of Mt Eliza Village? Look no further! We present to you a stunning two-bedroom unit that has been beautifully renovated and is ready for you to call it home.

**View :** <https://www.mcewingpartners.com/lease/vic/bayside/mount-eliza/residential/unit/7288934>

Conveniently located at 2/131-133 Mt Eliza Way, this unit offers the perfect blend of comfort, convenience, and contemporary living. Take a leisurely stroll to the vibrant Mt Eliza Village, where you'll find an array of shops, cafes, and amenities right at your doorstep.



**Samantha Stephenson**  
**0397872422**

Step inside and be captivated by the spaciousness and elegance of this unit. The two generously sized bedrooms come complete with built-in robes, providing ample storage space for all your belongings. New carpets and gorgeous timber floors flow seamlessly throughout the unit, creating a warm and inviting atmosphere.

# Flat 2, 131-133 Mt Eliza Way, Mount Eliza

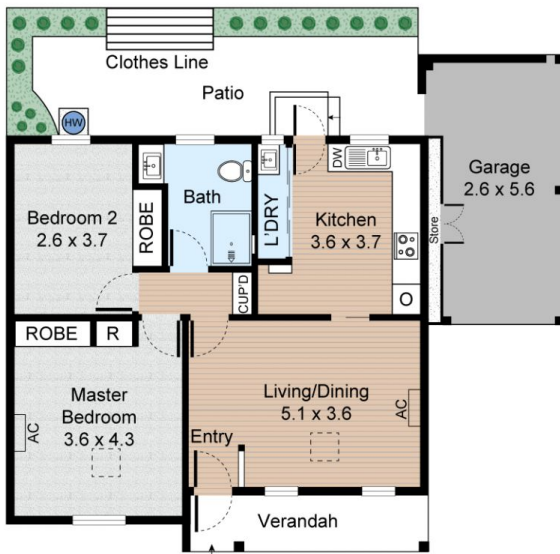
2 Bed 1 Bath 1 Car



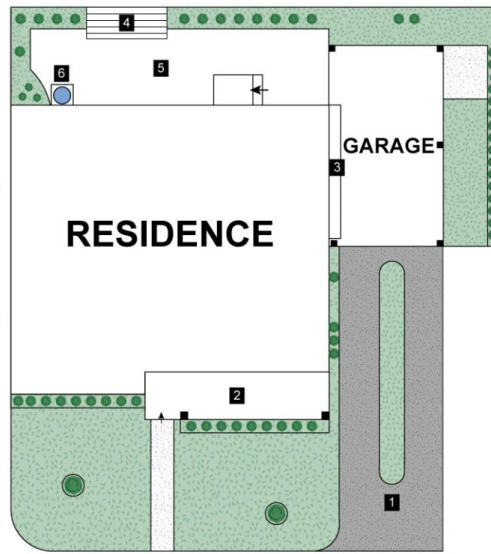
## LEGEND

1. Driveway
2. Verandah
3. Store
4. Clothes Line
5. Patio
6. Hot Water Tank

Internal : 85m<sup>2</sup>



FLOOR PLAN



SITE PLAN

