



6A Morven Street MORNINGTON VIC

3 2 2

Setting a new benchmark in architectural excellence, this sleek and contemporary residence delivers breathtaking dimensions, grand proportions, and a magnetic coastal ambiance united by state-of-the-art luxury found across its multiple inspiring levels. A commanding entrance sets the luxury tone for the entire home, before revealing a light-filled void and striking staircase, encouraging connection across the first floor. A glass lift adds flawless functionality, aiding access to the accommodation level, where a stylish family bathroom services two generous bedrooms (BIRs), and a peaceful lounge extends entertaining across a private courtyard. Orientated to absorb the incredible bay views, the entertaining domain encompasses a free-flowing living and dining domain, and state-of-the-art kitchen with 80mm stone benchtops, integrated fridge and dishwasher and Miele appliances. Opening out via glass sliders to a sun-drenched balcony

Price : \$ 2,730,000

View : <https://www.mcewingpartners.com/sale/vic/mornington-peninsula/mornington/residential/house/7288765>



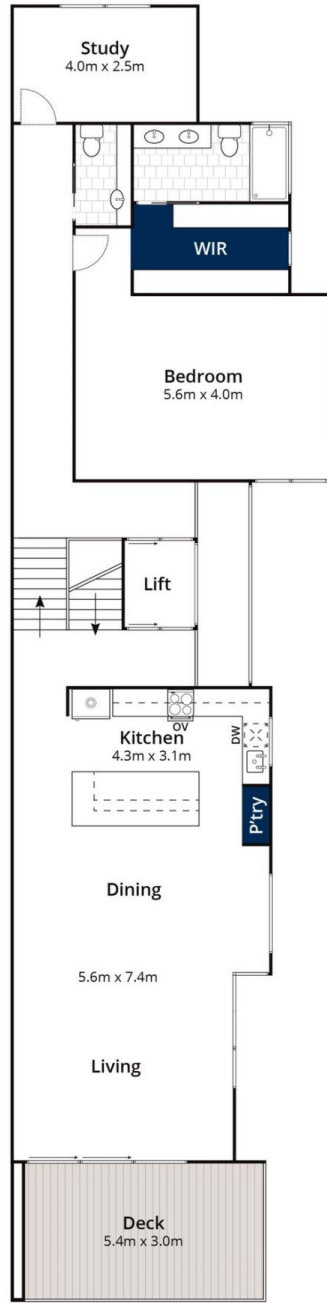
Dean Phillips
0359754555



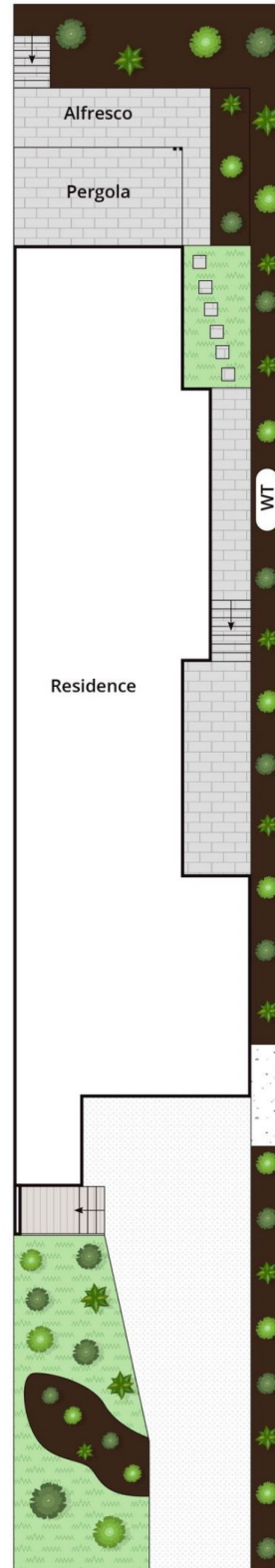
Alexandra Otte
0359754555



Ground Floor



First Floor



Site Plan

Approx House Area 306m²
Approx Land Area 463m²

Whilst bwr.com.au has made every attempt to ensure the accuracy of the floor plan contained here, measurements are approximate and no responsibility is taken for any error, omission, or mis-statement. This plan is for illustrative purposes only.

6A Morven Street, Mornington